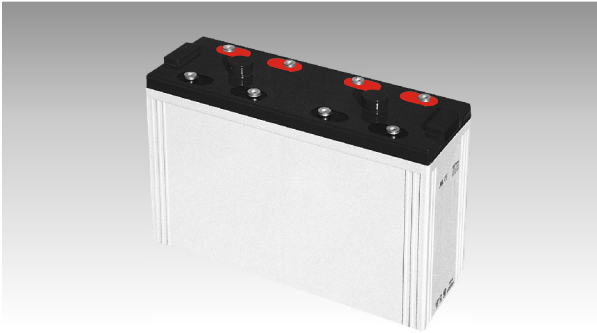
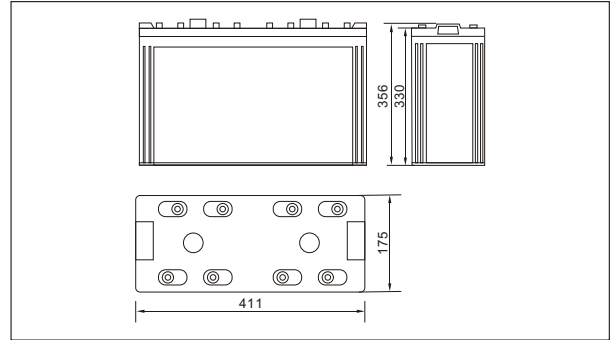




Sw28000(2V800AH)



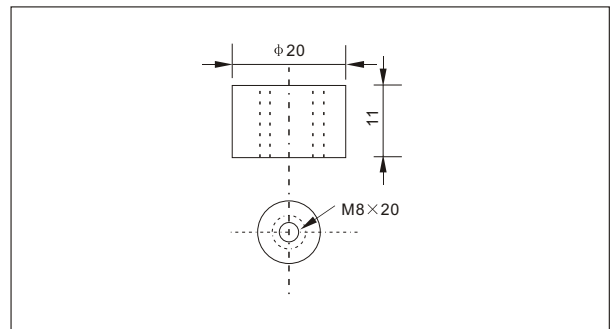
● Outer dimensions (mm)



● Specifications

Nominal Voltage		2 V
Rated capacity (10 hour rate)		800 Ah
Dimensions	Total Height	356 mm (14.0 inches)
	Height	330 mm (13.0 inches)
	Length	410 mm (16.1 inches)
	Width	175 mm (6.89 inches)
Weight Approx		57 Kg (126 lbs)

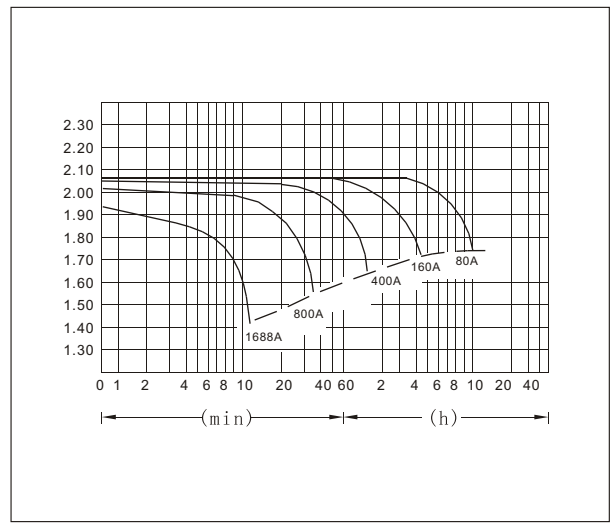
● Terminal Type (mm)



● Characteristics

Capacity 25°C(77°F)	10 hour rate(120 A)	800 AH
	5 hour rate(128A)	640 AH
	1 hour rate(480 A)	480 AH
	1.5 hour discharge to 1.75 V	320 A
Internal Resistance	Full charged Battery at 25°C(77°F)	0.5 mΩ
Capacity affected by Temperature (10hour rate)	40°C(104°F)	102%
	25°C(77°F)	100%
	0°C(32°F)	85%
	-15°C(5°F)	65%
Self-Discharge at 25°C(77°F)	Capacity after 3 month storage	91%
	Capacity after 6 month storage	82%
	Capacity after 12 month storage	64%
Terminal	T20	
Charge (constant Voltage)	Cycle	Initial Charging Current less than 320 A Voltage 2.35-2.40V
	Float	Voltage 2.25-2.30V

● Discharge Curves 25°C(77°F)



Constant Current(Amp) and Constant Power(Watt) Discharge Table at 25°C(77°F)

Time		10min	30min	1h	2h	3h	4h	5h	8h	10h	20h
1.60V	A	1688	912	480	280	205.6	160.0	132.0	93.0	89.6	45.60
	W	3124	1628	926	540	397	309	255	180	162	87.5
1.70V	A	1520	888	451.2	267.2	200.0	156.0	129.6	91.0	84.0	45.36
	W	3005	1613	871	516	386	301	250	176	158	85.4
1.75V	A	1280	816	437	260.8	195.2	153.6	128.0	90.4	81.9	44.24
	W	2912	1523	843	503	377	296	247	174	156	84.3
1.80V	A	1280	752	422	254.4	190.4	151.2	124.8	88.0	80.0	43.68
	W	2799	1465	806	494	369	290	242	171	155	83.8
1.85V	A	1200	672	398	248.0	184.0	146.7	121.6	85.6	78.00	43.20
	W	2751	1453	785	492	365	289	241	170	151	81.4