

Easy Access

Application software for access control system

Introduction

Easy Access is access control application software of managing and controlling the controllers. By card technology, automatic control technology and software, the system can realize Automazation, Intelligitization of controller management; consequently, improve the security of the access. Using card as information carrier, controllers can automatically identify card information and compare card ISN, card reading time with authorization, time schedule, holiday table and other relative parameters saved in the controllers, and then confirm whether to send signal to the lock to open the door. At the same time, the card reading time, card information and the controller alarm event will be saved in the corresponding database for operators to search access record and alarm event in the future.

Easy Access can be connected with all controllers of China Vision and Elko such as CV9600/EL500, CV8600/EL600, etc.

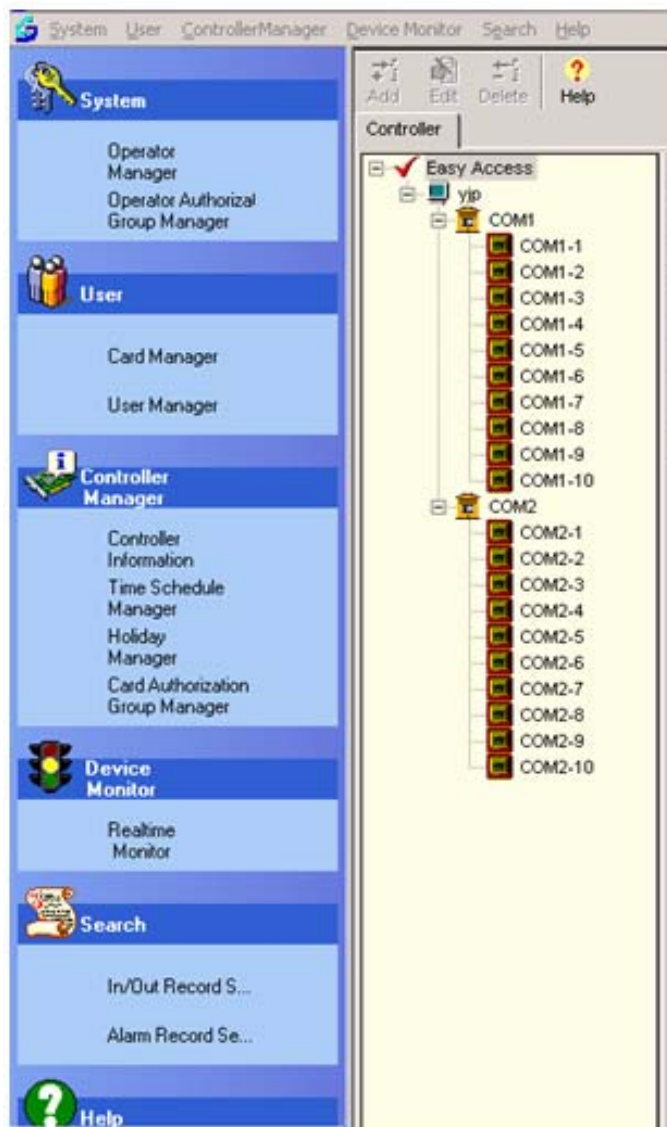









Figure 1 Easy Access Menu

Main features

	<p>Operator manager and authorization group manager</p> <p>It's the security management for the system, which can authorize the operator to login and operate Easy Access system. The operator can only operate the authorized module.</p>
	<p>User manager and card manager</p> <p>Including the operation to the user and card such as add, edit, delete, search, authorization, assign, lock, unlock, regain, etc.</p>
	<p>Controller manager</p> <p>Manage the controllers, modify serial port number and its baud rate; set controller's parameter, e.g. address, baud rate, door open mode, relay delay parameter, LCD information parameter, the parameter's value of controller. Clarify 3-level tree structure management, that is computer-serial port-controller; one serial port can connect with Max. 98 controllers via RS 485 bus, the computer can be expanded to 10 serial ports in Easy Access System; therefore, Easy Access System can connect with Max. 980 controllers.</p>
	<p>Time Schedule manager</p> <p>There're 15 time schedule, in which there's 8 days (Sunday to Saturday, and holiday), and there's 5 time segments in each day.</p>

	<p>Holiday table management</p> <p>There're 9 holiday tables in each controller, in which there're 30 holidays. You can modify or delete these holiday table. When card is read, the card-reading date will be compared with holiday table to confirm if the door can be opened in holidays.</p>
	<p>Real-time monitor of controller</p> <p>Real-time monitor the controller's communication status; real-time collect controller event; download controller's parameter, time schedule, holiday table, card information to corresponding controller; open door and close door by software</p>
	<p>Search</p> <p>During the running of the Easy Access system, the controller event will be saved in the database, you can search legal event and alarm event.</p>

Feel free to send your inquiry to sales@cv-it.com, should you need Easy Access Demo.