

4. Technical Feature Form

Specifications		Size	FP-20	FP-30	FP-40	FP-50	FP-60	FP-80	FP-100	FP-120	FP-140
		Air volume (m ³ /h)	H	340	510	680	850	1020	1360	1700	2040
	M	290	380	590	660	880	1170	1510	1770	1810	
	L	190	270	460	420	670	960	1260	1460	1570	
Cooling total capacity (w)	H	1836	2604	3844	4529	5436	7275	9280	10800	12318	
	M	1561	2135	3229	3759	4566	6329	7888	9288	10593	
	L	1212	1562	2499	2899	3533	4947	6496	7668	8746	
Sensible capacity (w)	H	1290	1671	2530	2198	3380	4540	5310	6190	8389	
	M	1108	1487	2320	2680	3170	4330	5200	5980	7074	
	L	774	1075	1900	2280	2800	2980	4810	5530	5900	
Heating capacity (w)	H	2598	4329	5280	6750	7950	10897	14870	16713	19474	
	M	2078	3377	4100	5175	7300	9045	11896	13100	15774	
	L	1507	2424	3200	4200	6100	6756	8922	9866	11879	
Noise dB(A)	H	≤36	≤36	≤38	≤42	≤45	≤43	≤46	≤48	≤49	
	M	≤33	≤33	≤34	≤37	≤40	≤39	≤41	≤43	≤43	
	L	≤31	≤32	≤34	≤35	≤38	≤37	≤37	≤35	≤36	
Input power (w)	Standard type	30	32	48	60	70	90	110	160	180	
	Excess pressure type	40	50	55	70	90	100	160	200	220	
Power source		Single Phase 220V50Hz									
Exchanger	Structure	The copper is in charge of the high-efficient turn-ups aluminium wing slice of each									
	Work pressuer(pa)	1.2MPa									
	In/out water pipe	Coil pipe Dn20 pipe thread					Coil pipe Dn20 pipe thread				
	Condensate pipe	Condensate coil pipe DN20 pipe thread									
	Water flow(kg/h)	340	480	780	880	1080	1440	1800	1920	2200	
	Water resistance(kpa)	10	20	30	35	45	35	38	40	39	

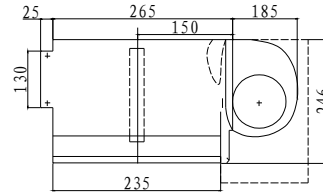
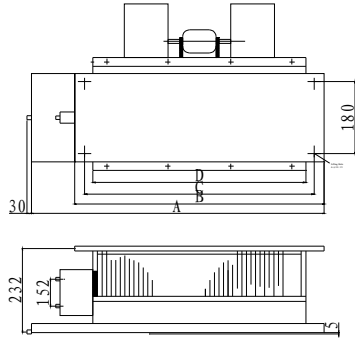
1. Rated flow is tested when the static pressure at the outlet is 0 Pa.

2. Cooling parameters: dry-bulb temperature of inlet air is 27°C, Wet-bulb temperature is 19.5°C, humidity is 49.36% water inlet temperature is 7°C and water outlet temperature is 12°C, the water temperature difference is 5°C (same to total cooling capacity H/M/L and sensible cooling capacity H/M/L)

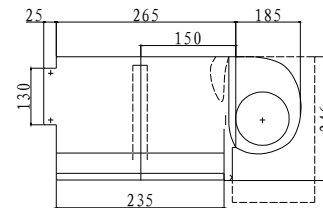
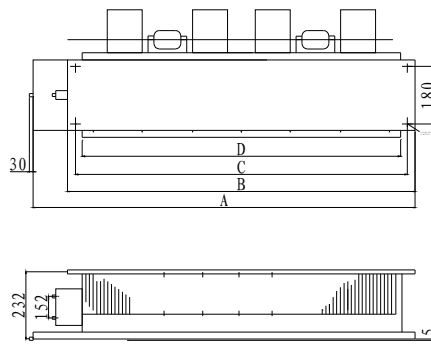
3. Heating parameters: dry-bulb temperature of inlet air is 20°C, water inlet temperature is 60°C, and the water flow is the same as the cooling conditions.

4. Noise measurement: tested below product 1 meter

FP- 20 30 40 50 60



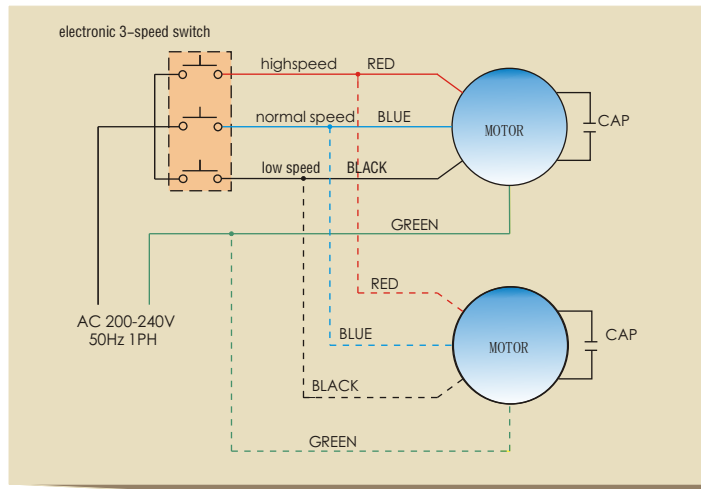
FP- 80 100 120 140



Note: Single-axis motor for FP-20, Double-axis motor and three fans for FP-80

Size \ Type	A	B	C	D
FP-20	740	515	485	445
FP-30	840	590	560	520
FP-40	930	705	675	635
FP-50	1040	805	775	735
FP-60	1130	905	875	835
FP-80	1335	1135	1105	1065
FP-100	1555	1355	1325	1285
FP-120	1790	1565	1535	1495
FP-140	2140	1910	1880	1840

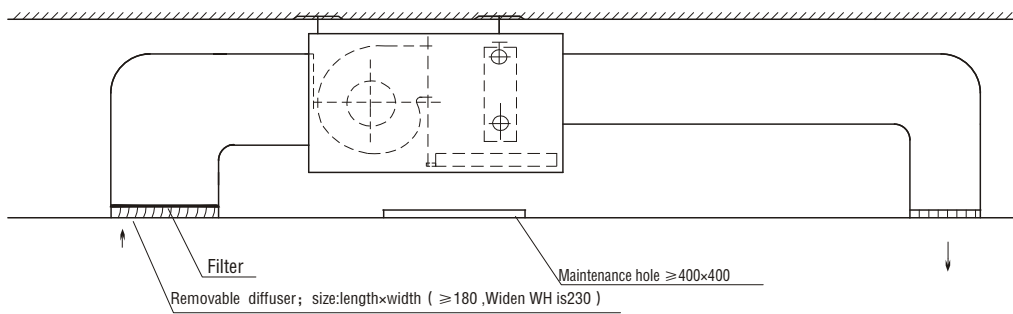
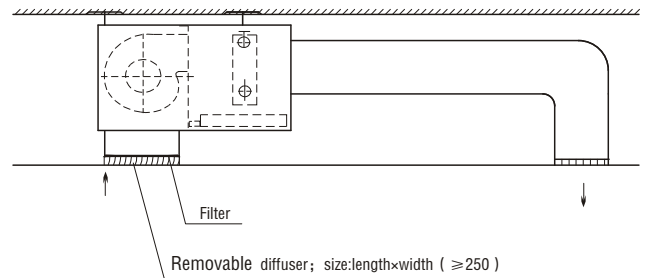
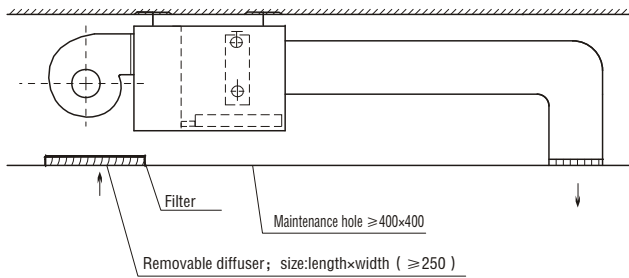
5 Wiring Diagram

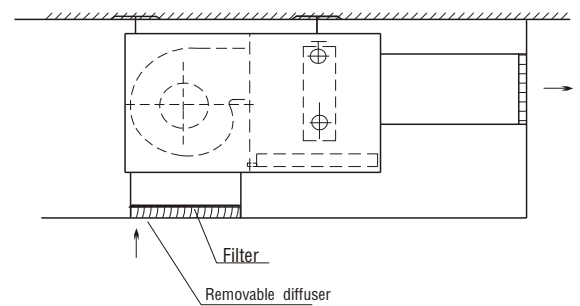
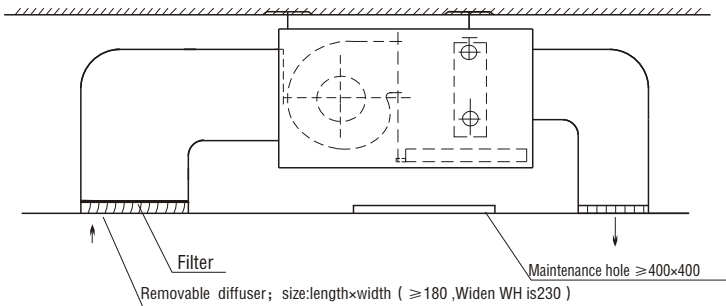
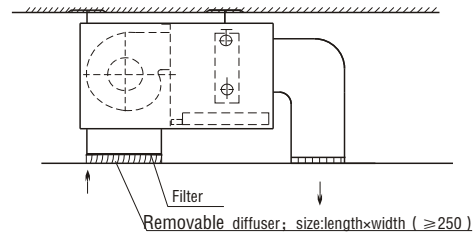
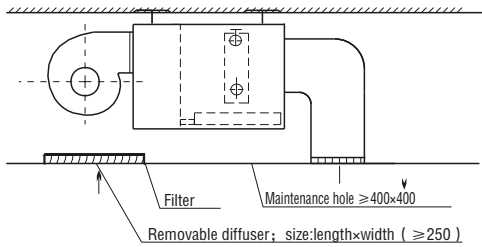


Note: The broken line part is applicable only to FP 80 FP 100 and FP 120

6 Illustration of Installation

Examples of Installation





7 Installation








- 1, The outlet pipe is at the upper side of the heat exchanger while the inlet pipe is at the lower side. The condensed water outlet pipe is at the lowest point.
- 2, The unit shall be installed horizontally. And the installation of the condensed water pipe shall bear enough drop height to ensure the normal outlet of condensed water.
- 3, Valves shall be installed at the outside for in/out pipe for the adjustment of water flow and to cut off the water supply during maintenance.
- 4, Air duct and water pipe connected to the A/C units shall be supported separately from the units.
- 5, Necessary cleaning shall be applied to the system before water supply to ensure the exchange efficiency.
- 6, Before the initial start-up, check the wiring connections, grounding condition and if there are any remaining dirt. When everything is ready, start the fan and check the rotation direction.
- 7, Freeze-proofing measures shall be taken in pressure debug in winter,

8 Operation, Maintenance

- 1, Start the fan and pump, and the unit will run. Release the gas if necessary.
- 2, In idle time, the unit shall be filled with water to avoid erosion. In winter, certain anti-frost crack measures shall be applied.
- 3, In winter, the temperature of applying hot water shall be no less than 60°C; the supplying water shall be clean.
- 4, The air filter shall be cleaned or replaced periodically.
- 5, Apply full-range maintenance after running for two years. Use appropriate chemicals to clean the heat exchanger. The supplier may provide charged services.
- 6, Check the wiring connection, protection devices and the grounding to remove all potential dangers.

9 Product Order

- 1, Should state the type , specification of the aircrew and use the operating mode exhaustivly while ordering.
- 2, should state the position of into water pipe, outer water pipe and condensate pipe.
- 3, If needing to provide the electronic switch or the warm accusing of device together , should order alone .
- 4, Should be indicated in the contract If there are special demands.

Specs Name		Picture	WA	WAP	WAPF	LA	LAP	LM	WM	KM
			WAF	WHA	WHAF					
Switch	Simple On-Off 3-speed switch			○			○	●	○	○
	Temperature regulator controller			○			○	○	○	○
Outlet grille				○			○	●	●	●
Inlet grille				○			○	●	●	●
Fresh air inlet				○			○	○	○	—
Return Air Box				○			—	—	—	—
Filter				○			●	●	●	●
Condensate plate	Extending type			○			○	—	—	—
	Stainless steel			○			○	○	○	○
Ripple hose	Copper			○			○	○	○	○
	Stainless steel			○			○	○	○	○

Note :in the table "●" stand for the fittings of units carried; "○"stand for selecting the fittings in order to be must be ordered alone.
 "—"stand for not select it. Air outlet and air inlet of LM、WM、KM is not showed in this table.