



# 东一部品仕样承认书

## APPROVAL SHEET

客 户 CUSTOMER	
客户产品编码/规格 PRODUCT SPECIFICATION	
品 名 PART NAME	自锁开关
型 号 MODEL	PS-2266
制 样 DSGD BY	叶玉兰
审 核 CHKD BY	富 胜
担 当 APPD BY	富 胜
送 样 日期 SENDING DATE	日期:
承认印 APPD PRINT	

深 圳 市 东 一 部 品 电 子 有 限 公 司

TONER PARTS ELECTRONICS CO.,LTD

ADD: 深圳市龙岗区坪地镇黄竹工业区

HUANGZHU INDUSTRIAL PARK PINGDI TOWN

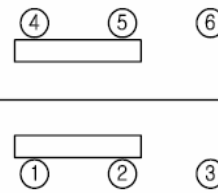
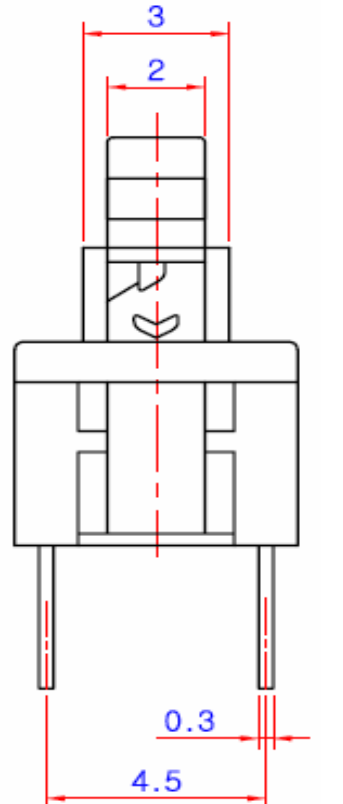
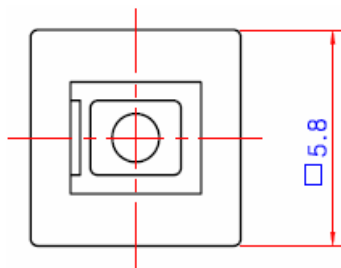
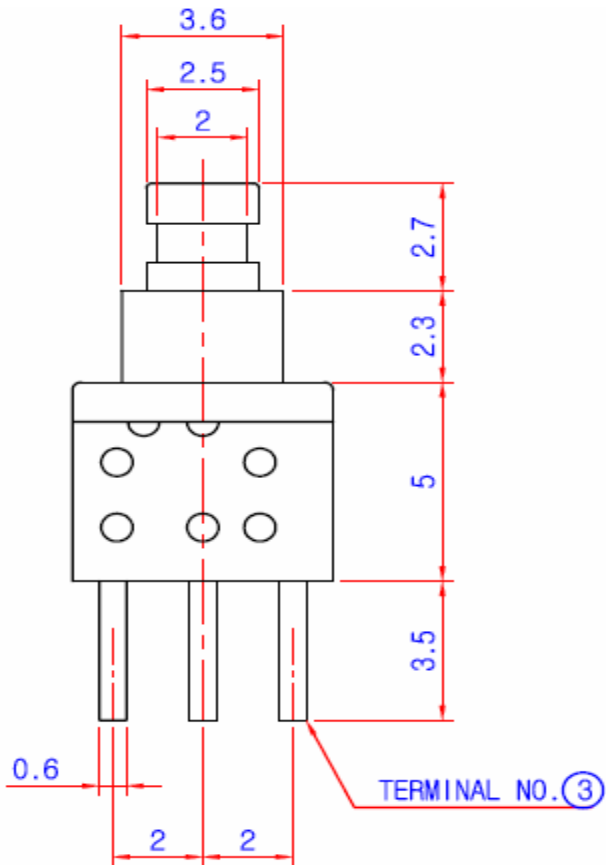
LONGGANG AREA SHENZHEN CITY CHINA

TEL: 0755-84091585 84090865

FAX: 0755-84090796

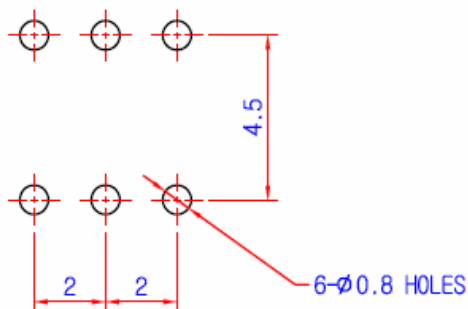
HTTP: //www.e-hanxing.com

E-mail:root@e-hanxing.com



CIRCUIT DIAGRAM

P.C.B DIAGRAM



\* NOTES

1. RATING : DC 30V , 0.1A
2. CIRCUIT : 2C - 2P
3. TIMING : NON SHORTONG
4. OPERATING MODE : SELF-LOCK, NON-LOCK
5. STROKE : FULL 1.9mm, LOCK 1.0mm
6. OPERATING FORCE : 200 ± 80gf
7. LIFE : 50,000 CYCLES MIN

公差: 0~4: ±0.1; 4~16: ±0.15; 16~64: ±0.25mm

自锁开关  
PUSH SWITCH

型号

PS-2266

图号

标记	处数	更改文号	签名	日期	数量	质量	比例	04:01
----	----	------	----	----	----	----	----	-------

设计/日期	李建强 2004.9.1
-------	--------------

校对/日期	李建强 2004.9.1	审核/日期	张云 2004.9.1
-------	--------------	-------	-------------

工艺/日期	李建强 2004.9.1	批准/日期	富胜 2004.9.1
-------	--------------	-------	-------------

东一部品电子有限公司  
TONE PARTS ELECTRONICS CO., LTD

	INSPECTION LIST	
	PUSH SWITCH	SAMPLE: 1 EA

1. MECHANICAL PERFORMANCE

- 1.1 Operating mode : As per individual specification.
- 1.2 Operating force : As per individual specification.
- 1.3 Terminal strength : A static load of 500gf is applied on the tip of terminal in on arbitrary direction for 1 minute. shall be free from falling off or breakage of terminal and breakage of substrate as well. The electrical performance requirements specified shall be met.
- 1.4 Lever deviation : A static load of 100gf is applied on the tip of the operating part, and measurement is made of the maximum deviation.  
Max:1m/m
- 1.5 Solderability : Solder temperature:  $250 \pm 5^{\circ}\text{C}$   
Dip time:  $3 \pm 0.5\text{sec}$   
Over 90% of the immersed part shall be cover with solder.

2. ELECTRICAL PERFORMANCE

- 2.1 Rating : 30V. 0.1A DC
- 2.2 Timing : As per individual specification.
- 2.3 Contact resistance :  $100\text{m}\Omega$  max.
- 2.4 Insulation resistance:  $100\Omega$  min at 500V DC  
500V DC is applied between terminals and between terminal and case for 1 minute  $\pm 5$  seconds.
- 2.5 Withstand voltage: 500V AC (50-60Hz) is applied between terminals and between terminal and case for 1 minute. shall be free from dielectric breakdown.

3. ENDURANCE PROOF

3.1 Mechanical operation

- With no load applied, 10,000 cycle continuous operations (15-20 Cycles per minute) are performed.
- i) Contact resistance :  $100\text{m}\Omega$  max.
  - ii) Insulation resistance:  $10\text{M}\Omega$  min.
  - iii) Withstand voltage : 250V AC 1 minute
  - iv) Operating force : Within +10% of specified. value.

4. WEATHER PROOF

- 4.1 Cold proof: After testing at  $-20 \pm 3^{\circ}\text{C} \pm$  for  $48 \pm 5$  hours, the sample is allowed to under normal temperature and humidity conditions for 1 hour after that.

						APPD	CHKD	DSGD	TITLE
						FUSHENG	YUNZHAN	QIANGQI	PS2266
							G	NG LI	DOCUMENT NO.
ZONE	SYMB	DATE	APPD	CHKD	DSGD				PUSH-1

INSPECTION LIST						SAMPLE: 2 EA			
PUSH SWITCH									
<p>4.2 Dry heat proof : After testing at <math>80\pm 2^{\circ}\text{C}</math> for <math>48\pm 5</math>hours, the sample is allowed To stand under normal temperature and humidity conditions for, and measurement is performed within 1 hour after that, Electrical performance of the above 4.4 shall be assured.</p> <p>4.3 Damp heat proof: After testing at <math>40\pm 2^{\circ}\text{C}</math> and 90-95% in relative humidity for 96 hour, the sample is allowed to stand under normal temperature And humidity conditions for 1 hour after that water drops should be wiped off. Electrical performance of the above 4.4 shall be assured.</p> <p>4.4 Performance</p> <p>I )Contact resistance : <math>200\text{m}\Omega</math> max</p> <p>ii)Insulation resistance : <math>100\text{M}\Omega</math> min</p> <p>iii)Withstanding voltage : 500V AC 1 minute.</p> <p>iv)operating force : Within+10%-30% of specification</p>									
						APPD	CHKD	DSGD	TTTLE
						FU	YUN	JIANG	PS2266
						SHEN	ZHAN	QIANG	DOCUMENT NO.
ZONE	SYMB	DATE	APPD	CHKD	DSGD	G	G	LI	PUSH-1