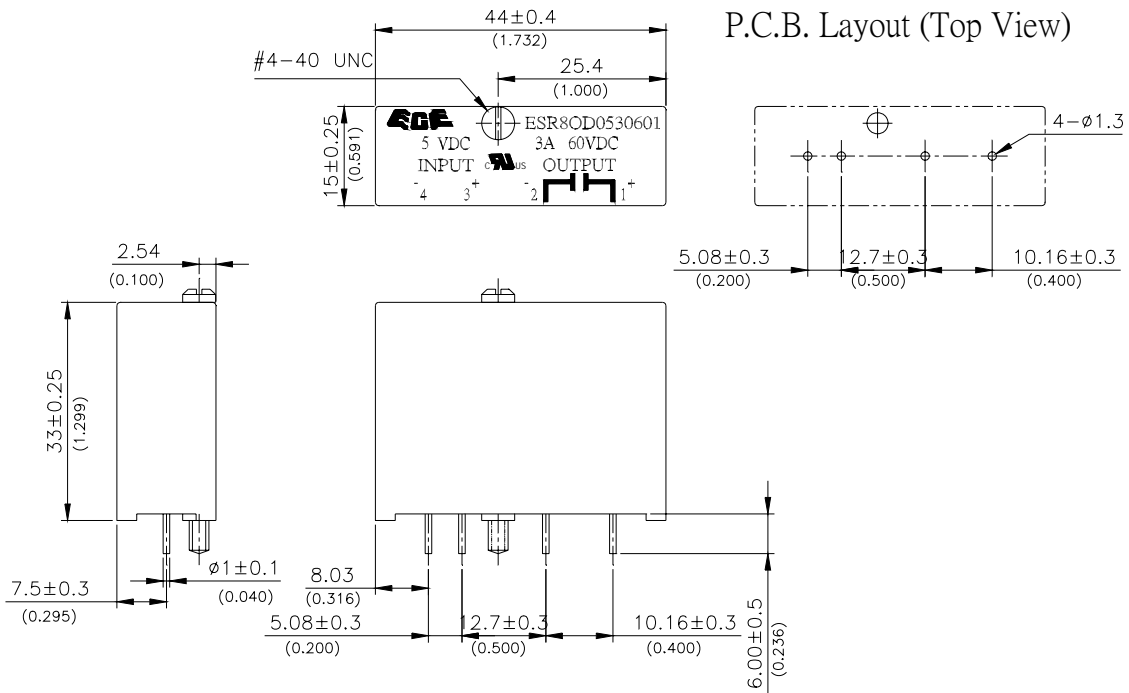


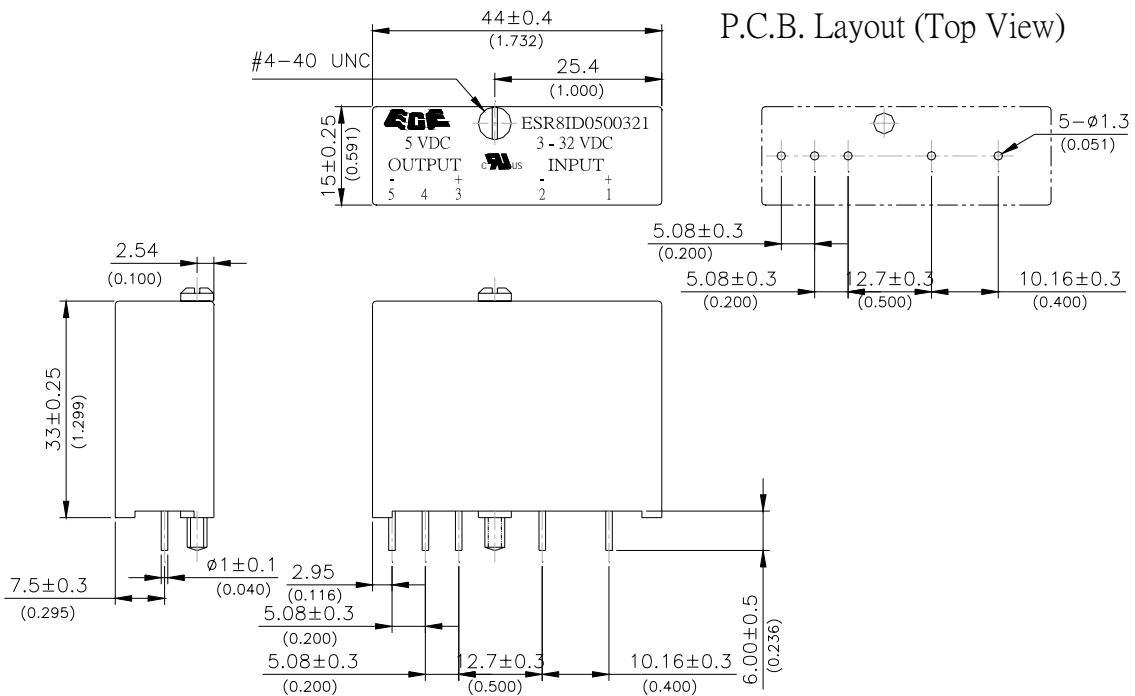


■ DIMENSIONS

ESR8-OD TYPE DIMENSIONS UNIT:mm(inch)



ESR8-ID TYPE DIMENSIONS UNIT:mm(inch)



■ SPECIFICATIONS (OUTPUT CONTROL)

DESCRIPTION	ESR80A			ESR80D		
	0532400	1532400	2432400	0530601	1530601	2430601
■ INPUT CIRCUIT						
Nominal Input Voltage (VDC)	5	15	24	5	15	24
Control Voltage Range (VDC)	2.5-6.0	8.5-18.5	16.5-29.0	2.5-6.0	8.5-18.5	16.5-29.0
Min. Turn-off Voltage (VDC)	2			2		
Typical Input Current (mADC)	10			10		
Max. Input Current (mADC)	27	20	13.5	27	20	13.5
Input Resistance (Ω)	240	900	2.2k	240	900	2.2k
■ OUTPUT CIRCUIT						
Max. Load Current	3A			3A		
Nominal Load Voltage	240 VAC			60 VDC		
Load Voltage Range	24-240 VAC			3-60 VDC		
Non-Repetitive Max. Voltage	600 Vpeak			60 Vpeak		
Non-Repetitive Max. Peak Current	80A			5A		
Max. Off-state Leakage Current	5mA			1.0mA		
Max. On-state Voltage Drop	1.5 VAC			1.5 VDC		
Min. Load Current	50mA			10mA		
Max. Off-state Voltage Drop (dt/dv)	100V/ μ s					
Operating Frequency Range	47Hz ~ 63Hz					
■ GENERAL CHARACTERISTICS						
Zero-on or Random-on	Z			R		
Max. Turn -on Time	8.3ms (60Hz)			50 μ s		
Max. Turn-off Time	8.3ms (60Hz)			100 μ s		
Insulation Resistance	DC 500V $10^8 \Omega$ Min. (Between Input & Output, Input / Output & Case)					
Dielectric Strength	3.5K VAC (Between Input & Output)					
Capacitance	10pF Max. (Between Input & Output)					
Operating Temperature	-20°C ~ +80°C					
Storage Temperature	-40°C ~ +100°C					

■ SPECIFICATIONS (INPUT CONTROL)

DESCRIPTION	TYPES	ESR8IA			ESR8ID		
		0502401	1502401	2402401	0500321	1500321	2400321
■ INPUT CIRCUIT (Pin 1+2)							
Control Voltage Range	90-280VAC			3-32VAC			
Min. Turn-off Voltage	40VAC			2VDC			
Max. Input Current	10mADC			16mADC			
Operating Frequency	47Hz ~ 63Hz						
Input Resistance				2.2K Ω			
■ OUTPUT CIRCUIT (Pin 4+5)							
Max. Output Current	50mA						
Nominal Load Voltage	30VDC						
Max. Output Voltage Drop	200mVDC						
Max. Off-state Leakage Current	10 μ A						
■ LOGIC SUPPLY (Pin 3+5)							
Supply Voltage Range	3-6	9-18	20-30	3-6	9-18	20-30	
Max. Supply Current	16mA						
Max. Off-state Leakage Current	10 μ A						
■ GENERAL CHARACTERISTICS							
Max. Turn -on Time	20ms			1.0ms			
Max. Turn-off Time	20ms			1.0ms			
Insulation Resistance	DC 500V 10 ⁸ Ω Min. (Between Input & Output, Input / Output & Case)						
Dielectric Strength	3.5K VAC (Between Input & Output)						
Capacitance	10pF Max. (Between Input & Output)						
Operating Temperature	-20 $^{\circ}$ C ~ +80 $^{\circ}$ C						
Storage Temperature	-40 $^{\circ}$ C ~ +100 $^{\circ}$ C						