

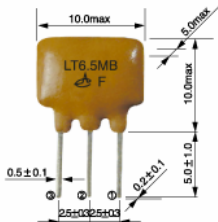
## LT□MB 电视机/录像机用系列陶瓷滤波器 LT□MB Series of Ceramic Filter For TV/VCR Stage

4.5-6.5MHz

### 技术特性 TECHNICAL CHARACTERISTICS

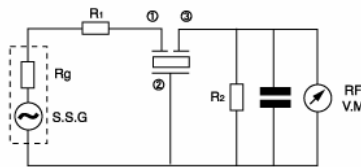
型号 Part Number	标称中心频率 Nominal Center Frequency(fn)(MHz)	3分贝带宽 3dB Band Width (kHz) min	20分贝带宽 20dB Band Width (kHz) max	插入损耗 Insertion Loss (dB) max	阻带衰减 Spurious Attenuation (dB)min	输入/输出阻抗 Input/Output Impedance( $\Omega$ )
LT4.5MB	4.500	$fn \pm 60$	530	6.0	20(4.5 $\pm$ 0.8 MHz)	1000
LT5.5MB	5.500	$fn \pm 75$	550	6.0	25(5.5 $\pm$ 1MHz)	600
LT6.0MB	6.000	$fn \pm 80$	600	6.0	25(6.0 $\pm$ 1MHz)	470
LT6.5MB	6.500	$fn \pm 80$	630	6.0	25(6.5+1MHz) 30(6.5-1MHz)	470

#### 外形与尺寸 FIGURE AND DIMENSIONS



①输入 Input  
②接地 Ground  
③输出 Output

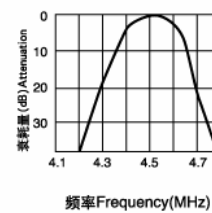
#### 测试电路 TEST CIRCUIT



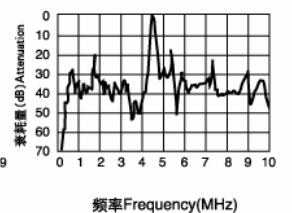
$Rg+R1=R2$ =输入/输出阻抗  
 $Rg+R1=R2$ =Input/Output Impedance  
 $C=10PF$   
(包括寄生电容和射频电压表的输入电容)  
(Including stray capacitance and input capacitance of RF voltmeter)

#### 特性曲线 CHARACTERISTICS

LT4.5MB 频率特性  
LT4.5MB Frequency Characteristics



LT4.5MB 杂波特性曲线  
LT4.5MB Spurious Characteristics



## LTS□MCB/ MDB 系列电视机/录像机用陶瓷滤波器(低假响应型) LTS□MCB/ MDB Series of Ceramic Filter For TV/VCR Stage(Low-Spurious Type)

4.5-6.5MHz

### 技术特性 TECHNICAL CHARACTERISTICS

型号 Part Number	标称中心频率 Nominal Center Frequency(fn)(MHz)	3分贝带宽 3dB Band Width (kHz) min	20分贝带宽 20dB Band Width (kHz) max	插入损耗 Insertion Loss (dB) max	阻带衰减 Spurious Attenuation (0~fn)(dB)min	输入/输出阻抗 Input/Output Impedance( $\Omega$ )
LTS4.5MCB	4.500	$fn \pm 60$	600	6.0	30	1000
LTS4.5MDB	4.500	$fn \pm 70$	750	6.0	30	1000
LTS5.5MCB	5.500	$fn \pm 60$	600	6.0	30	600
LTS5.5MDB	5.500	$fn \pm 80$	750	6.0	30	600
LTS6.0MCB	6.000	$fn \pm 60$	600	6.0	30	470
LTS6.0MDB	6.000	$fn \pm 80$	750	6.0	30	470
LTS6.5MCB	6.500	$fn \pm 70$	650	6.0	30	470
LTS6.5MDB	6.500	$fn \pm 80$	800	6.0	30	470