

XT□MB 电视机/录像机用系列陶瓷陷波器 XT□MB Series of Ceramic Trap For TV/VCR Stage

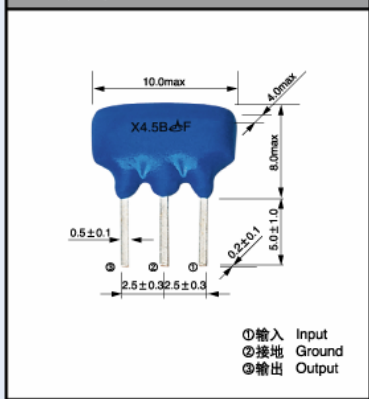
3.58-6.5MHz

技术特性 TECHNICAL CHARACTERISTICS

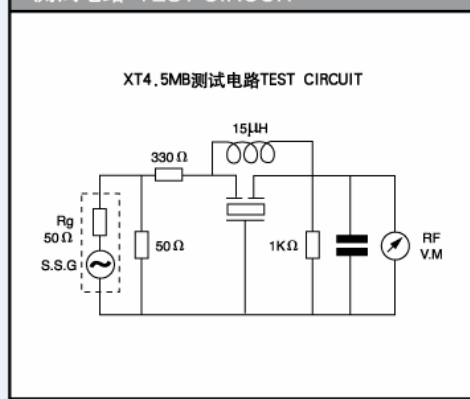
型号 Part Number	中心频率 Center Frequency (fn1)(MHz)	fn1点衰耗量 Attenuation (at fn1)(dB)min	30分贝衰耗带宽 30dB Attenuation BW (fn1)(kHz)min
XT3.58MB	3.580	25	40(25dB Att.BW)
XT4.43MB	4.430	30	50
XT4.5MB	4.500	35	70
XT5.5MB	5.500	35	90
XT5.74MB	5.742	35	90
XT6.0MB	6.000	35	90
XT6.5MB	6.500	35	90

以1MHz的电平为基准 (0分贝)
The level at 1MHz shall be made for a reference(0dB)

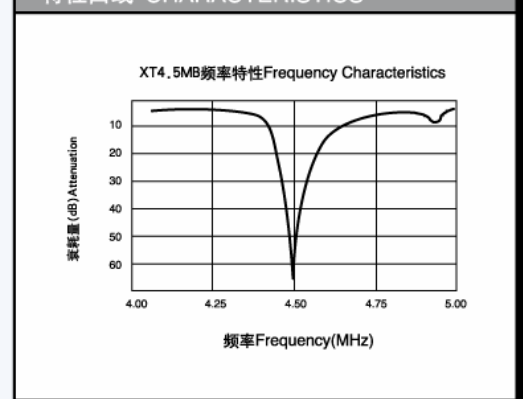
外形与尺寸 FIGURE AND DIMENSIONS



测试电路 TEST CIRCUIT



特性曲线 CHARACTERISTICS



双吸收型 XT□MW 系列陶瓷陷波器 XT□MW Series of Double Ceramic Trap

4.5-6.5MHz

技术特性 TECHNICAL CHARACTERISTICS

型号 Part Number	中心频率 Center Frequency (fn1)(MHz)	中心频率 Center Frequency (fn2)(MHz)	fn1点衰耗量 Attenuation (at fn1)(dB)min	fn2点衰耗量 Attenuation (at fn2)(dB)min	30分贝衰耗带宽 30dB Attenuation BW (fn1)(kHz)min
XT4.47MW	4.500	4.724	30	30	50
XT4.60MW	4.500	6.000	30	30	50
XT5.57MW	5.500	5.742	30	30	50
XT5.60MW	5.500	6.000	30	30	50
XT5.65MW	5.500	6.500	30	30	50
XT6.65MW	6.000	6.500	30	30	70

以1MHz的电平为基准 (0分贝)
The level at 1MHz shall be made for a reference(0dB)