

KING RIGHT MOTOR CO., LTD.

DC MOTOR TESTED TECHNICAL DATA

DATE: 3.08.26

MACHINE TYPE:20Kg-M

PROJECT:ASTG7256\24V

OUTPUT:

GEAR-RATIO:65:1

NO-LOAD-SPEED:64. RPM

VOLTAGE:24V

CURRENT:

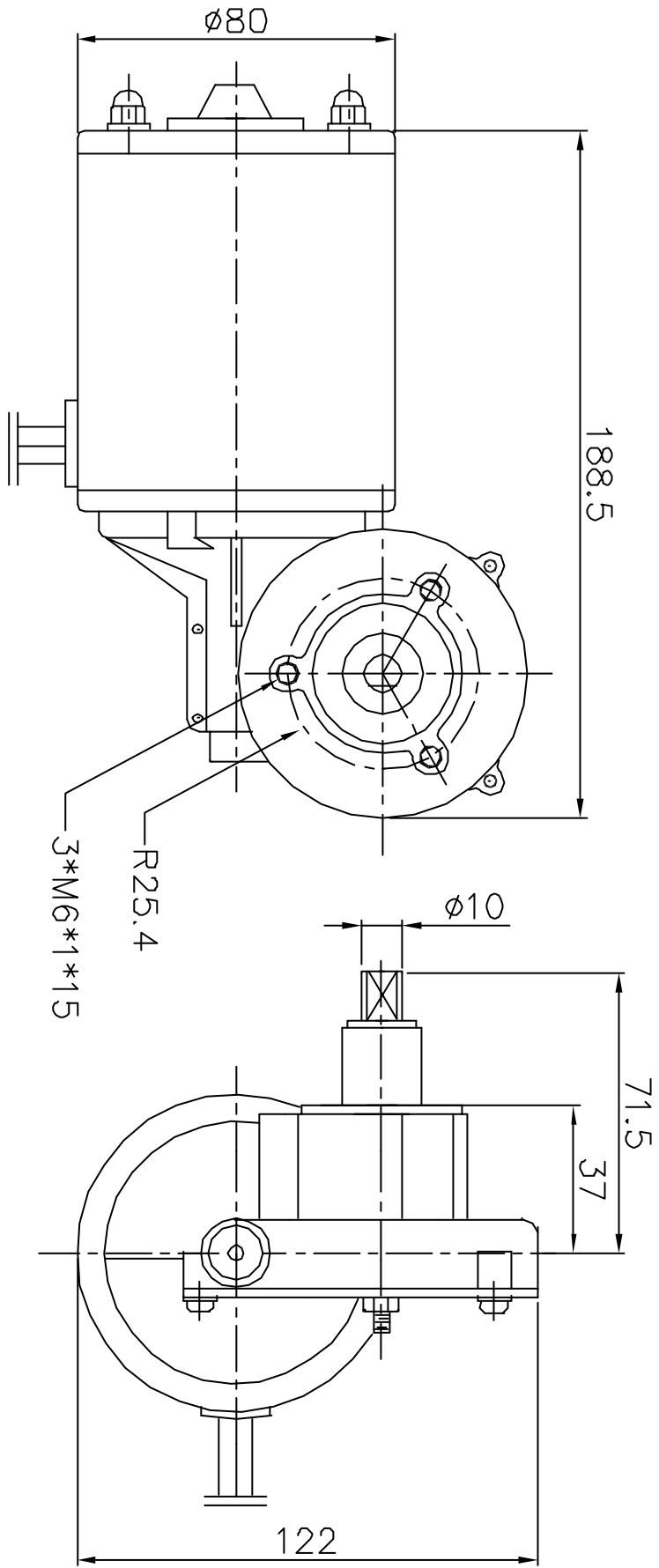
NO	R.P.M.	VOLT(V)	I(AMP)	INPUT(W)	TORQUE(KG-CM)	OUTPUT(W)	EFF(%)
1	66.0	24.08	2.32	55.95	28.00	19.00	33.96
2	63.9	24.10	5.12	123.37	73.00	47.90	38.83
3	62.9	24.07	5.88	141.54	90.00	58.10	41.05
4	62.2	24.08	6.80	164.10	106.00	67.60	41.70
5	60.9	24.07	8.18	196.98	124.00	77.50	39.34
6	59.8	24.06	9.40	226.27	146.00	89.60	39.60
7	58.1	24.03	11.24	270.10	168.00	100.10	37.06
8	57.4	24.01	13.55	325.38	188.00	110.70	34.02
9	54.3	24.00	17.76	426.24	211.00	117.60	27.59
N	0.0	0.00	0.00	0.00	0.00	0.00	0.00
R	0.0	0.00	0.00	0.00	0.00	0.00	0.00
L	0.0	0.00	0.00	0.00	0.00	0.00	0.00

PS. NO ->

N : NO LOAD

R : LOAD

L : LOCK



GEAR RATIO : 1/65

* Plastic or Brass Metal Gear *