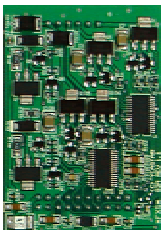
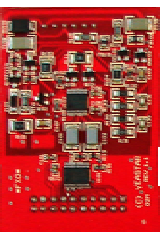


ExSky-Business Skype VoIP Gateway

ExSky is a business class Skype gateway with max. 16 ports in one pc based on Windows. Bringing skype into enterprises' existing traditional PABX system, ExSky allows all staff in company to make and receive calls of Skype and PSTN over the same office phone in the comfortable way that they have got used to. Users can change the configuration of FXS or FXO ports at random on the hardware card SKY800.



S2 Module
The S2 is a module with 2 FXS ports to connect to PBX's CO port



O2 Module
The O2 is a module with 2 FXO ports to connect to PBX'S Extension port

Target Applications

Gateway Termination to PBX's Co line and Extension lines

Standard Package

- SKY800 mother card (Length: 199mm)
- Up to 4 daughter modules;
- 4 line cables and 1 power cable
- Hardware Installation Instruction
- Software Installation CD;
- Package Size: 255mm*160mm*60mm
- Weight: 0.45kg

Interface Standard

- PCI 2.2 with 3.3- or 5-volt power
- 4P hard disk power supply with 12-volt
- FXS relevant RJ11 port supply DC Feed -48V and loop current 20mA
- Two color LED: **Red** light for **FXO** port and **Green** light for **FXS** port

Environment Conditions

- Operation Range: 0° to 50°C, 32° to 122° F
- Storage Range: -20° to 65°C, 4° to 149° F
- Humidity: 10-90% non-condensing

Operating System

- Windows XP Professional SP2;
- Windows 2003 SP2

Certification:

CE, FCC, MIC(Korea)

Concurrent Calls		3	5~6	8~9	16
PC Requirements	CPU	Celeron 2.8G	P4 2.66G	P4 2.8G Dual Core	Intel Core Duo 1.86G
	Memory	512M	1G	1G	1G