



Fx-UK07W ADSL POTS Splitter For CPE Side

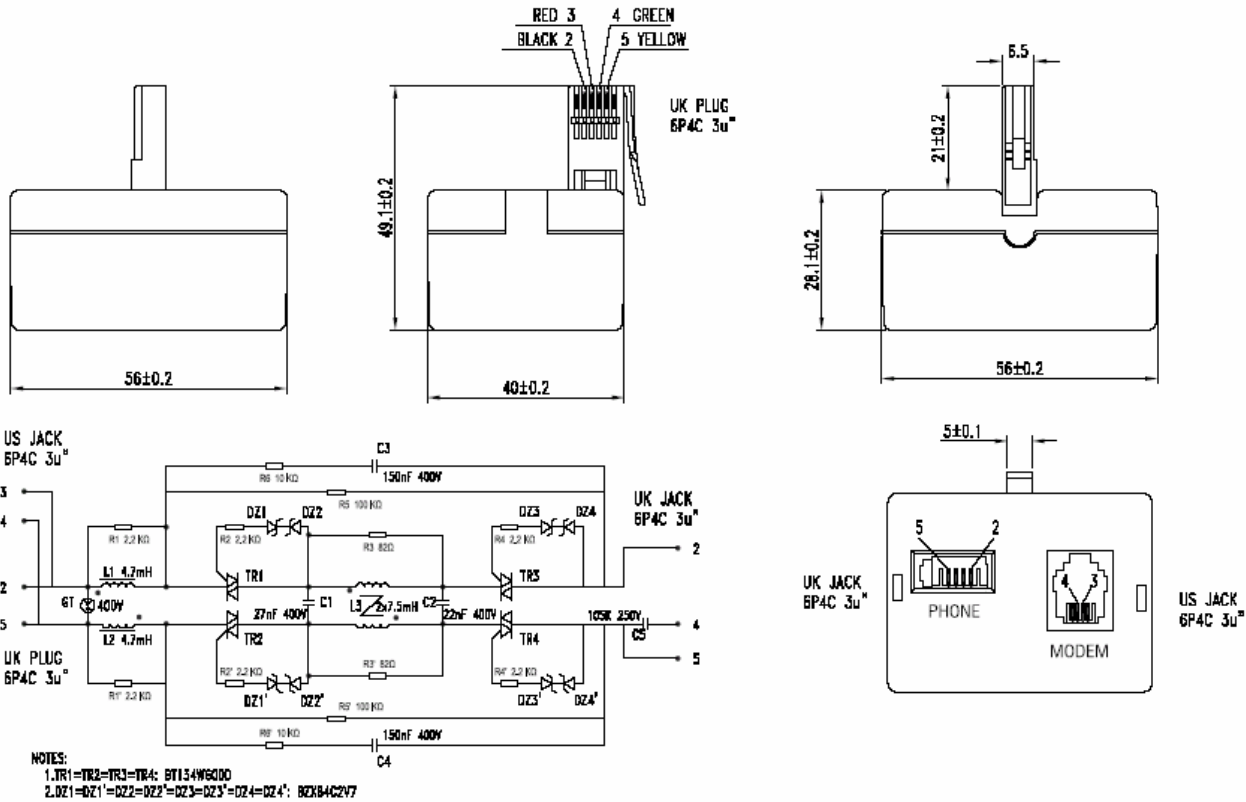


- ★ Compact package, includes connectors for ease of installation
- ★ Design for Glite Application
- ★ 100 mA DCI Loop Current Capacity

Specifications

POTS Port Impedance	320 Ω +230nF//1050 Ω	POTS Tip and Ring DC Voltage	0~105V
Insertion Loss @1KHz	1.1 dB Max	Return Loss @300Hz~500Hz	12dB Min
Insertion distortion @200~4 KHz	±1.0dB Max	@500Hz~2KHz	18 dB Min
Attenuation @35~450KHz	30dB Min	@2KHz~3.4KHz	12dB Min
@450K~1.104MHz	55dB Min	Isolation resistance tip/ring	10M Ω Min
Longitudinal Balance @200Hz~3K	50dB Min		

Wiring & Dimension Schematic



Head Office & Factory

SHAN-SIA DEVELOPMENT INDUSTRY AREA, HENG-LI TOWN, DONGGUAN CITY, GUANGDONG PROVINCE, CHINA

Tel: +86-769-3791376/7/8/9

Http: www.dgfuxin.com

Postal: 523467

Fax: +86-769-3713728