

Series 172 mini SD card connector 172系列mini SD卡連接器

Applications 應用領域

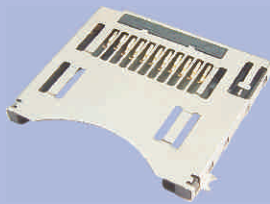
Notebook computer, DVD player, MP4, PMP, digital printer, PC, etc.
筆記本電腦, DVD播放機, MP4, PMP, 數碼打印機, PC等



Specifications 規格說明

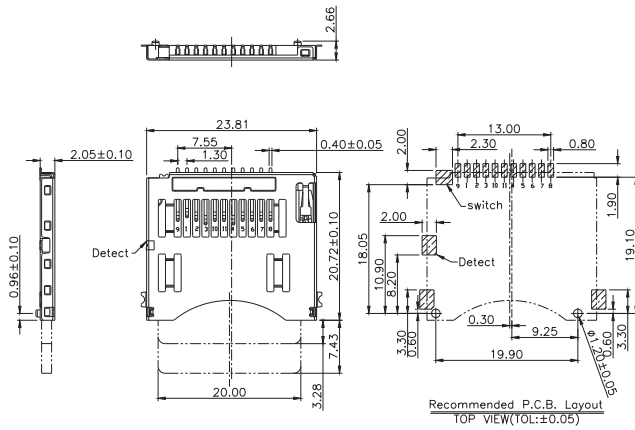
Electrical Performance 電氣特性		Mechanical Performance 機械特性		Environmental Requirement 環境特性	
Voltage rating 額定電壓	100V AC/DC	Durability 壽命	10,000 cycles	Operation temperature 工作溫度	-55°C to 105°C
Current rating 額定電流	0.5A	Mating force 插力	3kgf Max		
Dielectric strength 抗電強度	250V AC, 1min. Min	Unmating force 拔力	3kgf Max	Withstanding reflow soldering 耐回流焊	260°C ± 5°C
Insulation resistance 絕緣電阻	1000 MΩ Min	Retentiveness force 保持力	0.3kgf Min		
Contact resistance 接觸電阻	80 mΩ Max				

1720413001125002



Coding Rule 編碼規則:

Series NO.	1720413001125002	Packing
XX:01		0:Bag
02		1:Tray
.....		2:Reel
Series		3:Tube
Operation Code:		Characteristic
XX:00		Operation Code:
01		XX:00
.....		01
Pitch	
130:1.30mm		Mounting Type
Circuits		2:DIP 180°
011:11PIN		5:Horizontal SMT
Product Form		
1:Male		
2:Female		



POSITION OF CARD	DETECT TERMINAL
DASHING	CLOSE
LOCK	OPEN
FULL STROKE	OPEN

PIN NO.	PIN NAME(SD MODE)
1	CD/DAT3
2	CMD
3	VSS1
4	VDD
5	CLK
6	VSS2
7	DAT0
8	DAT1
9	DAT2
10	NC(FOR FUTURE USE)
11	NC(FOR FUTURE USE)