

片式 LTCS10.7M 系列陶瓷滤波器 Chip Type LTCS10.7M Series of Ceramic Filter

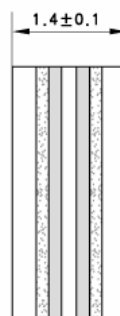
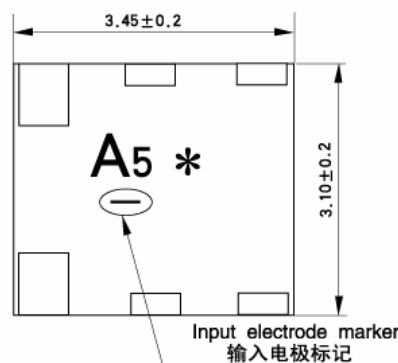
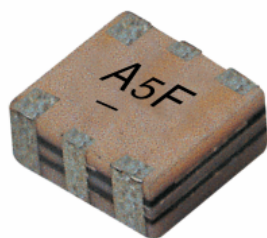
10.7MHz

技术特性 TECHNICAL CHARACTERISTICS

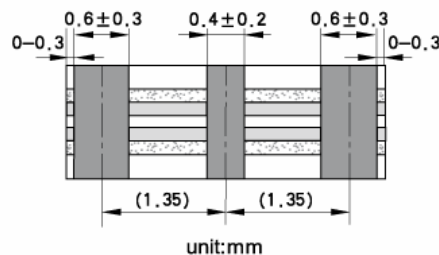
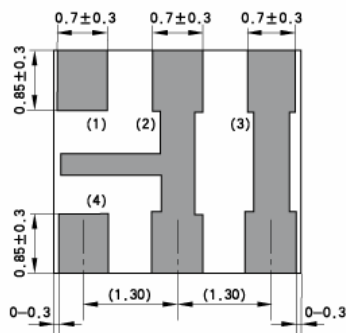
型号 Part Number	3分贝带宽 3dB Band Width (KHz)	20分贝带宽 20dB Band Width (KHz)max	插入损耗 Insertion Loss (dB)	阻带衰减 Spurious Attenuation (9-12MHz)(dB)min
LTCS10.7MS3	180±40	470	4.5±2.0	30
LTCS10.7MS2	230±50	510	3.5±2.0	30
LTCS10.7MA5	280±50	590	3.0±2.0	30
LTCS10.7MA20	330±50	700	3.0±2.0	30

输入/输出阻抗: 330Ω
Input/Output Impedance: 330Ω

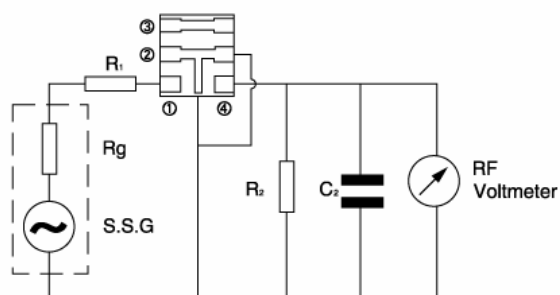
外形与尺寸 FIGURE AND DIMENSIONS



- (1): Input 输入
 - (2): Ground 接地
 - (3): Float(signal line) 空脚
 - (4): Output 输出
- (in mm) 单位
(*): EIAJ monthly code
生产月份代码



测试电路 TEST CIRCUIT



- ①输入 Input
- ②接地 Ground
- ③空脚 Float
- ④输出 Output

Rg+R1=R2=330Ω
C=10PF
(包括寄生电容和射频电压表的输入电容)
(Including stray capacitance and input capacitance of RF voltmeter)