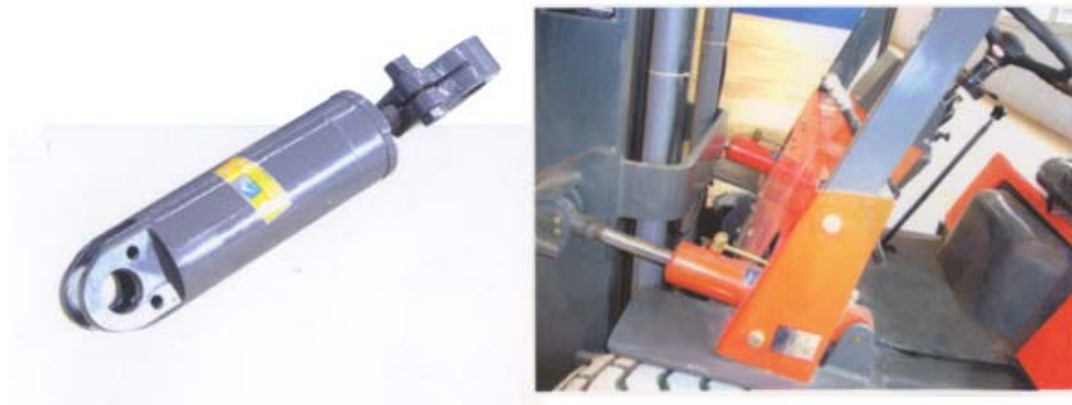


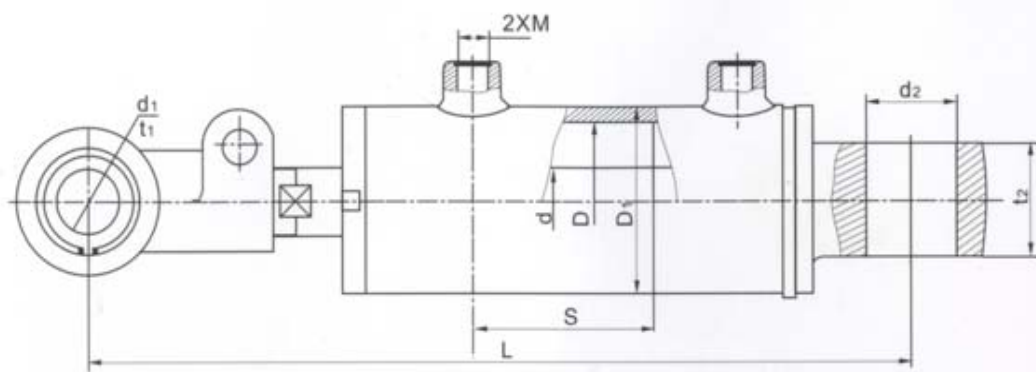
## Leaning Cylinder For Forklift



### Features:

1. Nominal Pressure: 14~18 MPa (140 ~ 180 Bar)
2. NOK, Busak+Shamban Seals
3. Plated with chrome, chrome layer thickness $\geq 0.03\text{mm}$ , surface hardness HV  $\geq 900$ , Ra0.2
4. A series of products is provided(with parameters below), can be revised or re-designed according to customer's requirements.
5. Used for 0.5~18T(500KGS~18000KGS) forklift.

### Drawing:



Parameters:

No.	Drawing No.	D	d	S	L	D1	d1	d2	t1	t2	M
1	20CY75-3W-00 (20CY75-30000B)	70	36	158	430	83	40	32	40	40	ZG1/4
2	30CJA75-3W-00 (30CJA75-30000B)	80	35	157	430	94	40	32	40	40	R1/4
3	10QJ75-5W-00 (10QJ75-50000)	63	30	130	425	73	40	32	40	40	ZG1/4
4	50CYAI75-8W/9W-00 (50CYAI75-80000A/90000A)	100	40	217	626	121	40	40	40	40	M18X1.5
5	15W-00E	63	32	146	463	76	30	30	45	35	M14X1.5
6	3.0DCQ-00D/E-ZY	70	30	159	469	83	35	32	40	40	G1/4
7	DCQ70/32.99-00/ZY	70	32	99	428	83	30	35	46	46	M14X1.5
8	4.0DCQ-00D/ZY	90	50	159	490	106	35	42	45	45	M14X1.5
9	DCQ70/30.159-00	70	30	159	487	83	35	32	40	40	G1/4
10	DCQ80/35.160A-00	80	35	160	506	94	35	9	40	40	G1/4
11	CQG70/30.170-00	70	30	170	465	83	30	42	50	50	9/16-18UNF
12	CQG70/30.140-00	70	30	275	430	83	30	42	50	50	9/16-18UNF
13	CQG85/40.195-00	85	40	195	491	102	30	42	50	50	9/16-18UNF
14	CQG90/45.202.5-00/ZY	90	45	203	402.5	106	40	40	58	45	M16X1.5
15	CQG80/36.170E-00	80	36	170	470	95	30	30	40	40	M14X1.5