

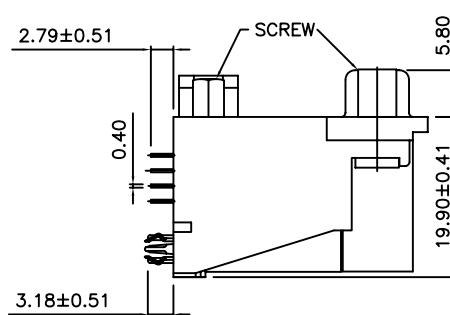
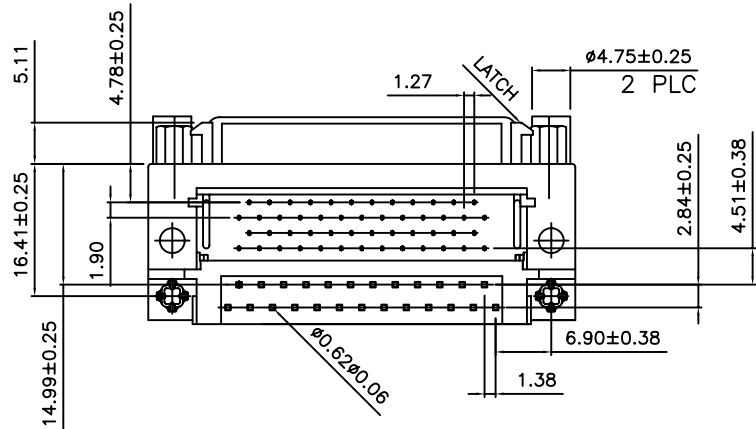
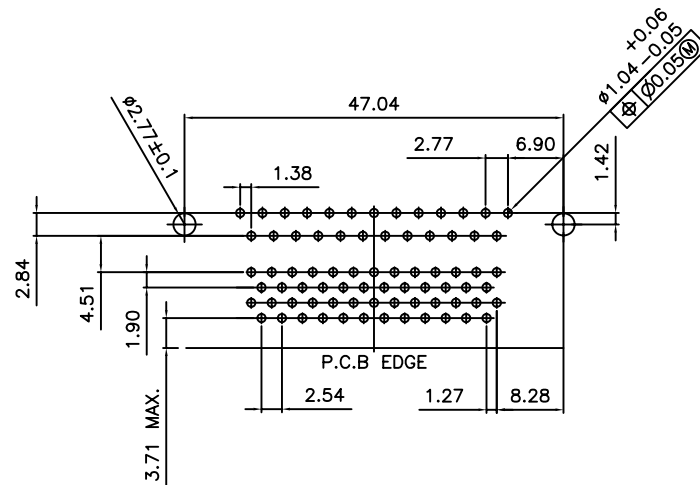
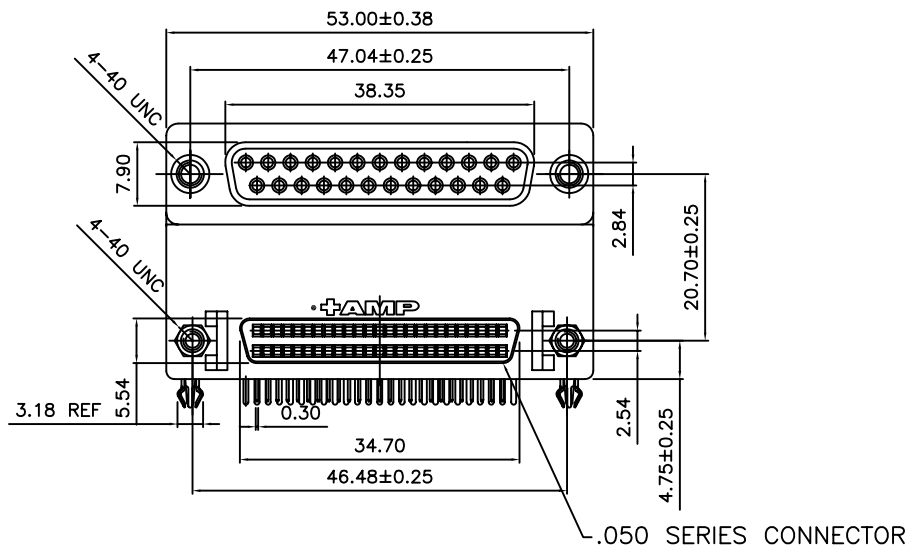
NUMBER
D377



METRIC

Product Drawing

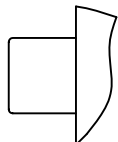
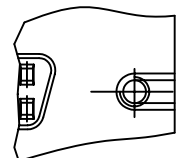
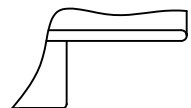
LOC DWI



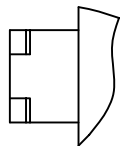
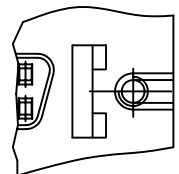
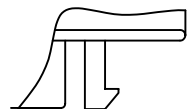
PRELIMINARY

ANGLES: ±3°		
DECIMALS: .X=±0.38, .XX=±0.25		
DR	APP	CONSER Conser Precision Electronics Co., Ltd.
CHK	DATE 95/02/28	
FILE NO. AD377-02501		SIZE A4 REV 1
SCALE 1:1	NAME D-SUB P.C.B. SCSI DUAL PORT LEAD FREE	
FILE ADD. ENGINEER\E\EG\DWG\D\D377\		

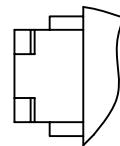
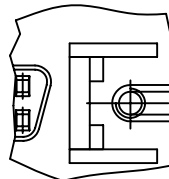
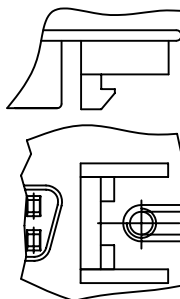
DATE	REVISION RECORD	LTR



TYPE 1
SCALE 3:1



TYPE 2
SCALE 3:1



TYPE 3
SCALE 3:1

NOTE :

1. MATERIAL FOR D-SUB CONNECTOR:
 - 1.1 INSULATOR : THERMOPLASTIC PLOYESTER
UL 94V-0,COLOR IS BLACK.
 - 1.2 CONTACT : COPPER ALLOY
 - 1.3 SHELL : STEEL, TIN PLATEKD
2. MATERIAL FOR .050 SERIES CONNECTOR:
 - 2.1 INSULATOR : HIGHT TEMP., UL 94V-0,BLACK.
 - 2.2 CONTACT : COPPER ALLOY
 - 2.3 SHELL: STEEL
 - 2.4 BOARDLOCK : COPPER ALLOY.
2. FINISH :
 - CONTACT : 30 μ " MIN. GOLD PLATED ON CONTACT AREA
 - TIN PLATING ON SOLDERTAILS
 - NICKEL UNDERPLATED OVERALL
 - SHELL : NICKEL PLATED OVER COPPER PLATED.
 - BOARDLOCK: TIN PLATED OVER NICKEL PLATED.
3. WAVE SOLDER CAPABLE TO 265°C

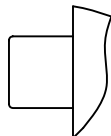
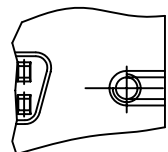
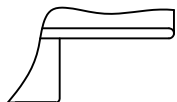
PRODUCT NO.	LATCH	SCREW
D377-150P-BK1601	TYPE 1	X
D377-150P-BK1602	TYPE 1	V
D377-150P-BK1603	TYPE 2	X
D377-150P-BK1604	TYPE 2	V
D377-150P-BK1605	TYPE 3	X
D377-150P-BK1606	TYPE 3	V

ANGLES: $\pm 3^\circ$		
DECIMALS: .X= ± 0.38 , .XX= ± 0.25		
DR	APP	CONSER Conser Precision Electronics Co., Ltd.
CHK	DATE 95/02/28	
FILE NO. AD377-02501		SIZE A4 REV 1
SCALE 1:1	NAME D-SUB P.C.B. SCSI DUAL PORT LEAD FREE	
FILE ADD. ENGINEER\E\EG\DWG\D\D377\		

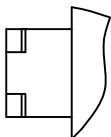
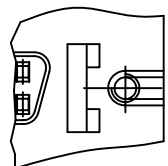
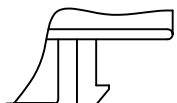
PRELIMINARY

LTR	REVISION RECORD	DATE

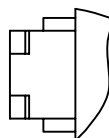
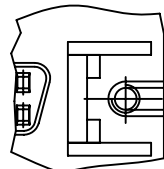
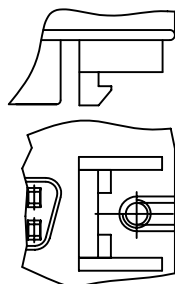
H
G
F
E
D
C
B
A



TYPE 1
SCALE 3:1



TYPE 2
SCALE 3:1



TYPE 3
SCALE 3:1

PRELIMINARY

NOTE :

1. MATERIAL FOR D-SUB CONNECTOR:

1.1 INSULATOR : THERMOPLASTIC PLOYESTER
UL 94V-0,COLOR IS BLACK.

1.2 CONTACT : COPPER ALLOY

1.3 SHELL : STEEL, TIN PLATEKD

2. MATERIAL FOR .050 SERIES CONNECTOR:

2.1 INSULATOR : HIGHT TEMP., UL 94V-0,BLACK.

2.2 CONTACT : COPPER ALLOY

2.3 SHELL: STEEL

2.4 BOARDLOCK : COPPER ALLOY.

2. FINISH :

CONTACT : 30 μ " MIN. GOLD PLATED ON CONTACT AREA

TIN PLATING ON SOLDERTAILS

NICKEL UNDERPLATED OVERALL

SHELL : NICKEL PLATED OVER COPPER PLATED.

BOARDLOCK: TIN PLATED OVER NICKEL PLATED.

3. WAVE SOLDER CAPABLE TO 265°C

PRODUCT NO.	LATCH	SCREW
D377-168P-BK1601	TYPE 1	X
D377-168P-BK1602	TYPE 1	V
D377-168P-BK1603	TYPE 2	X
D377-168P-BK1604	TYPE 2	V
D377-168P-BK1605	TYPE 3	X
D377-168P-BK1606	TYPE 3	V

ANGLES: $\pm 3^\circ$
DECIMALS: .X= ± 0.38 , .XX= ± 0.25

DR	APP	CONSER Conser Precision Electronics Co., Ltd.
CHK	DATE 95/02/28	

FILE NO. AD377-02502 SIZE A4 REV 1

SCALE 1:1 NAME D-SUB P.C.B. SCSI DUAL PORT LEAD FREE

FILE ADD. ENGINEER\E\EG\DWG\D\D377\

LTR	REVISION RECORD	DATE
-----	-----------------	------