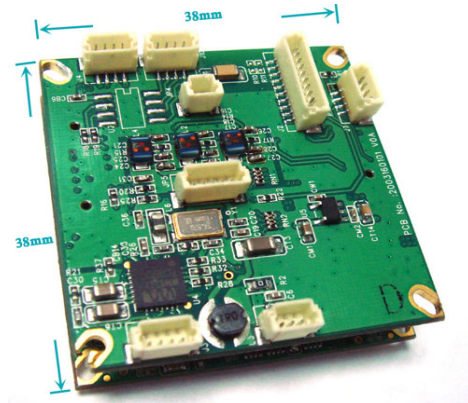


StarVedia VS316m

Compact video server module



Trouble-free MPEG4 video server module

With 3GPP/ISMA support

The StarVedia VS316m video server module is designed with the “user-friendly” idea deep in mind. It translates the analog video to digital video and sends the video to internet. Because of the tiny-size(38mmx38mm) of the VS316m, it can be easily integrated into a CCTV camera to become an IP camera or integrated with a box to become a video server. StarVedia provides excellent and free firmware and software for this video server module.

The user can install the VS316m product easily on his/her network and then access the video anywhere in the world through the accompanied video management software-CamView without setting some complicated DNS name or changing the router’s settings. It’s just a plug & play action and trouble-free installation.

With 3GPP/ISMA support, users can see the video of the VS316m product on any 3G mobile phone anywhere, anytime. Major 3G mobile brands including Nokia, Motorola, Sony-ericsson, LG, Samsung and HTC have been tested.

For indoor/outdoor surveillance and remote monitoring, the VS316m product provides the best image quality in its class, and excellent performance. The VS316m product also provides the best bandwidth efficiency, it offers full D1(720x480 for NTSC, 720x576 for PAL) resolution, 30 fps frame rate, real MPEG4 image compression ability. The microphone interface enables remote users to not only see,

but also listen for additional monitoring requirements.

Of course, with the built-in Web server, the VS316m product can also be managed from a standard web browser on a Windows computer. With the ActiveX support, users can also see the video display on the Windows IE browser.

The StarVedia VS316m product provides motion detection function. Users can easily setup this function and receive the notification with the snapshot images through email and/or ftp when some motion events are detected. Users can also record the motion-detected video through the CamView software.

The VS316m product is ideal for securing buildings, offices, factories, and residences over a local area network and/or the Internet.

Features

- Translate analog video to digital MPEG4 video for internet transmission.
- Easily access the video from anywhere in the world via the ID/password (Through accompanied video management software, no complicated DNS settings needed)
- 3GPP/ISMA support
- Connect up to 20 users simultaneously
- Supports enhanced MPEG-4 compression
- Supports resolution of up to full D1 at 30 fps.
- Supports Pelco-P and Pelco-D through RS-485 for PTZ control.
- Supports NTSC and PAL video input.
- Free video management software CamView accompanied for easy access and multi-videos management.
- View video from your local or internet network
- ActiveX video display in Microsoft IE browser.
- Motion Detection recording and E-mail/FTP snapshot notification
- Synchronize the system time through NTP protocol.
- Built-in Web server for managing via standard web browser.
- Built-in microphone interface for synchronized audio play-out.
- Online Firmware upgrade, will enter safe mode when power is off during critical firmware upgrade point.
- Watchdog function to prevent system failure.

Specifications

Models	StarVedia VS316m
Power	Input DC 12V, 200 mA, provide another output interface for external usage.
Network interface	Ethernet 10BaseT/100BaseTX, Auto-MDIX, RJ-45
Video interface	1 analog video input and 1 analog video output CVBS composite, 1.0Vp-p with 75 ohm loading
Serial interface	1 RS-232 interface for firmware debug usage 1 RS-485 interface for pan/tilt control, support Pelco-P, Pelco-D protocol
Rest button interface	One reset button interface, to factory default settings
Led Indicator interfaces	1 LED interface for internet connection status indication 1 LED interface for Ethernet connection indication Enable/disable – web configurable
Processors	RISC CPU, hardware video processing and compression.
Video compression	MPEG-4 Part 2 (ISO/IEC 14496-2) with motion detection. profiles: Simple Profile, level 0-3
Frame rate	Up to 30 fps in all resolutions
Video streaming	MPEG-4 Controllable frame rate and bandwidth
Video settings	Resolution: D1(720x480 for NTSC, 720x576 for PAL), CIF(352x240 for NTSC, 352x288 for PAL), QCIF(176x120 for NTSC, 176x144 for PAL) Bandwidth : 64k, 128k, 256k, 512k, 768k, 1M, 1.2M, 1.5M bps Frame rate : 5, 10, 15, 20, 25, 30 fps
Audio	Built-in microphone for audio monitoring Audio compression: MPEG2 audio, AMR-NB for 3GPP/ISMA(RTSP streaming)
Security	Web management username/password protection Video display ID/password protection WiFi WEP and WPA security mode
Installation, management and	Installation tool on CD and Web-based configuration Automatic configuration backup and restore

maintenance	Video management software-CamView for video access and multi-camera management Firmware upgrades via FTP
Minimum Web browsing and management software requirements	Built-in web server for standard web browser access Pentium 4(or equivalent AMD) CPU 1.0 GHz or higher, 512 MB DRAM
Supported protocols	IPv4, HTTP, TCP, ICMP, RTSP, RTP, UDP, RTCP, SMTP, SNTP, FTP, DHCP, ARP, DNS, PPPoE, etc.
Video management software	Surveillance application for viewing and archiving up to 16 cameras
Users	Up to 20 simultaneous unicast users (depends on video settings)
Alarm and event management	Events triggered by video motion detection Notification/upload of JPEG images over FTP and/or email
Dimensions (HxWxD) and weight	15 x 38 x 38 mm, 18 g
Operating conditions	0-50 °C Humidity 20 - 80% RH (non-condensing)

Notice : this spec is for firmware version v010619