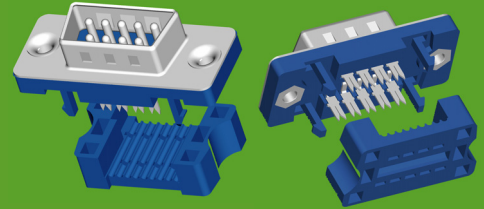
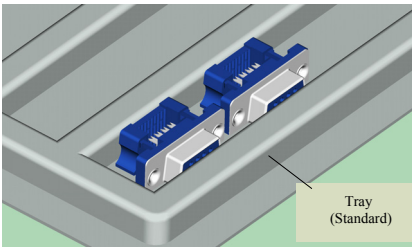


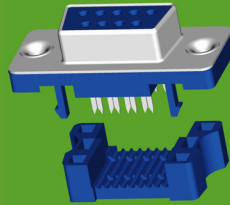
D-SUB Connector IDC Type

SPECIFICATIONS

Current Rating: 3.0AMP
 Contact Resistance: 20m Ω Max. FILE NO.E248993
 Insulation Resistance: 1000M Ω Min.
 Withstanding Voltage : 500V AC/Minute
 Operation Temperature: -55°C to+105°C
 Contact Material: Phosphor Bronze/Brass
 Contact plating: Au or Tin Over Ni
 Insulator Material: Polyester (UL94V-0)
 Standard: PBT+30%GF
 Shell: Cold Roller Steel ,Ni Plated
 Nut: Brass ,Tin Over Ni Plated



6224-XXMXXU01



6224-XXFXXU01

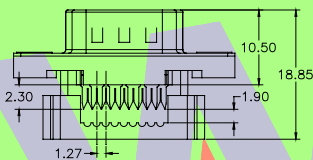
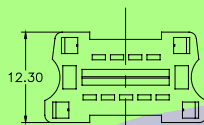
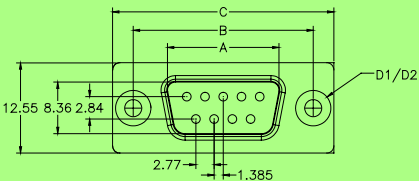
6224- XX X XX U 01

NO.OF PINS
9,15,25,37P

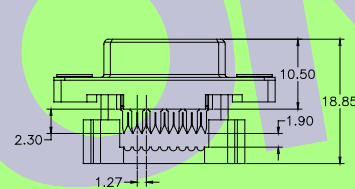
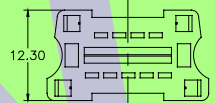
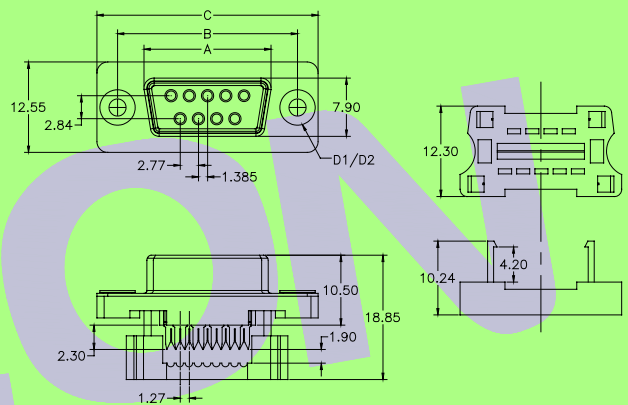
TYPE
M:Male
F:Female

CONTACT PLATING
 G0:1u" Gold S0:1u" Gold/Tin
 G1:3u" Gold S1:3u" Gold/Tin
 G2:5u" Gold S2:5u" Gold/Tin
 G3:10u"Gold S3:10u"Gold/Tin
 G4:15u"Gold S4:15u"Gold/Tin
 G5:30u"Gold S5:30u"Gold/Tin
 G6:20u"Gold S6:20u"Gold/Tin
 SN:Tin

INSULATOR COLOR
 B:Black W:White
 U:Blue G:Grey



No. of Positions	DIM "A"	DIM "B"	DIM "C"	DIM "D1"	DIM "D2"
9	16.92	24.99	30.81	∅3.20	#4-40
15	25.25	33.32	39.14		
25	38.96	47.04	53.04	无螺纹	有螺纹
37	55.42	63.50	69.32		



No. of Positions	DIM "A"	DIM "B"	DIM "C"	DIM "D1"	DIM "D2"
9	16.33	24.99	30.81	∅3.20	#4-40
15	24.66	33.32	39.14		
25	38.38	47.04	53.04	无螺纹	有螺纹
37	54.84	63.50	69.32		

※INNOVATION AND DEVELOPMENT※CONTINUAL IMPROVEMENT※QUALITY FOREMOST※CUSTOMER SATISFACTION※

Http:www.wafe-china.com E-mail:sales@wafe-china.com

WAFE DONGGUAN FAX:+86 769 85358915 TEL:+86 769 85358920
 WAFE KUNSHAN FAX:+86 512 57468468 TEL:+86 512 57468418