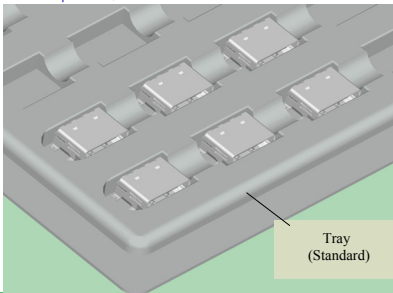


6510-19FHMXX00XW01

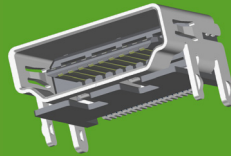
# HDMI Connector

## SPECIFICATIONS

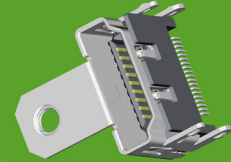
Current Rating: 0.5AMP  
 Contact Resistance: 50mΩ Max.  
 Insulation Resistance: 100MΩ Min.  
 Withstanding Voltage : 500V AC/Minute  
 Operation Temperature: -25°C to +80°C  
 Contact Material: Copper Alloy  
 Contact plating: Au or Tin Over Ni  
 Insulator Material: Polyester (UL94V-0)  
 Standard: PBT+30%GF  
 Shell: Spcc ,Ni Plated



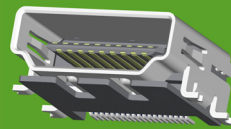
Tray  
(Standard)



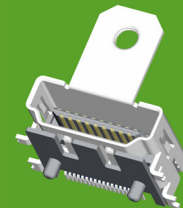
6510-19FHMXX00XN01



6510-19FHMXX01XN01



6510-19FHMXX03XN01



6510-19FHMXX04XW01

# 6510-19F XX XX XX X X 01

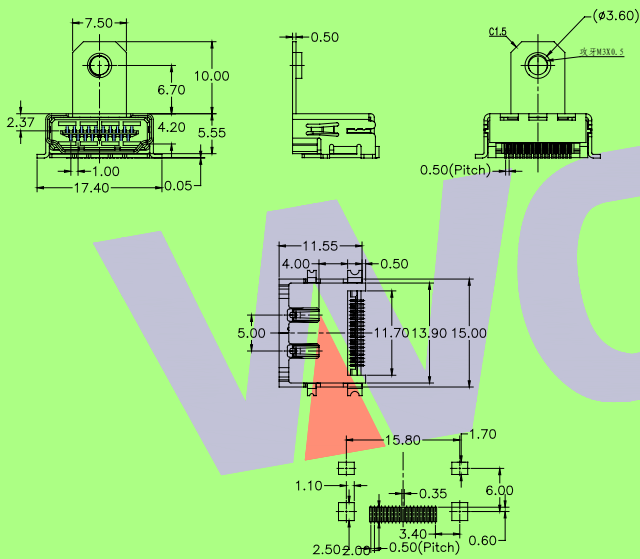
**CONTACT TYPE**  
 VM:180°SMT Upright  
 HM:90°SMT Horizontal  
 D2:90°Two Row DIP  
 D3:90°Three Row DIP  
 D4:90°Four Row DIP

**CONTACT PLATING**  
 G0:1u" Gold S0:1u" Gold/Tin  
 G1:3u" Gold S1:3u" Gold/Tin  
 G2:5u" Gold S2:5u" Gold/Tin  
 G3:10u"Gold S3:10u"Gold/Tin  
 G4:15u"Gold S4:15u"Gold/Tin  
 G5:30u"Gold S5:30u"Gold/Tin  
 G6:20u"Gold S6:20u"Gold/Tin  
 SN:Tin

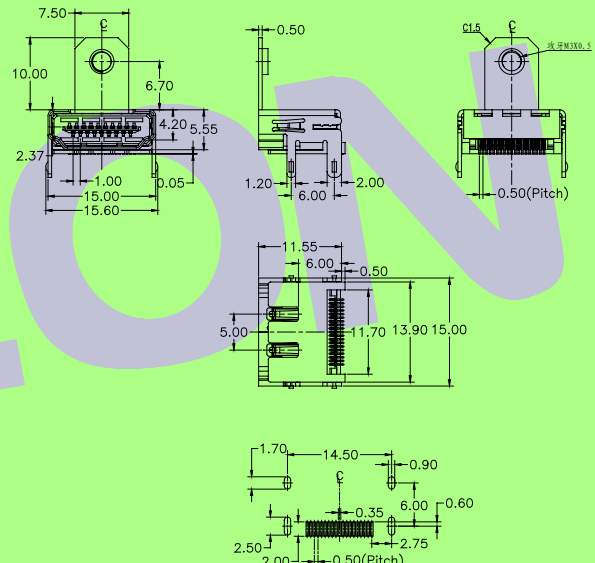
**SHELL TYPE**  
 00:DIP Without Screw eye  
 01:DIP With Screw eye  
 02:DIP With Screw eye in both side  
 03:SMT Without Screw eye  
 04:SMT With Screw eye  
 05:SMT With Screw eye in both side

**SHELL MATERIAL**  
 B:Brass  
 P:Phosphor Bronze  
 S:Spcc

**INSULATOR TYPE**  
 W:With Pillar  
 N:Without Pillar



Recommended P. C. B Layout (Top Side)



Recommended P. C. B Layout (Top Side)

※INNOVATION AND DEVELOPMENT※CONTINUAL IMPROVEMENT※QUALITY FOREMOST※CUSTOMER SATISFACTION※

Http:www.wafe-china.com E-mail:sales@wafe-china.com

WAFE DONGGUAN FAX:+86 769 85358915 TEL:+86 769 85358920  
 WAFE KUNSHAN FAX:+86 512 57468468 TEL:+86 512 57468418