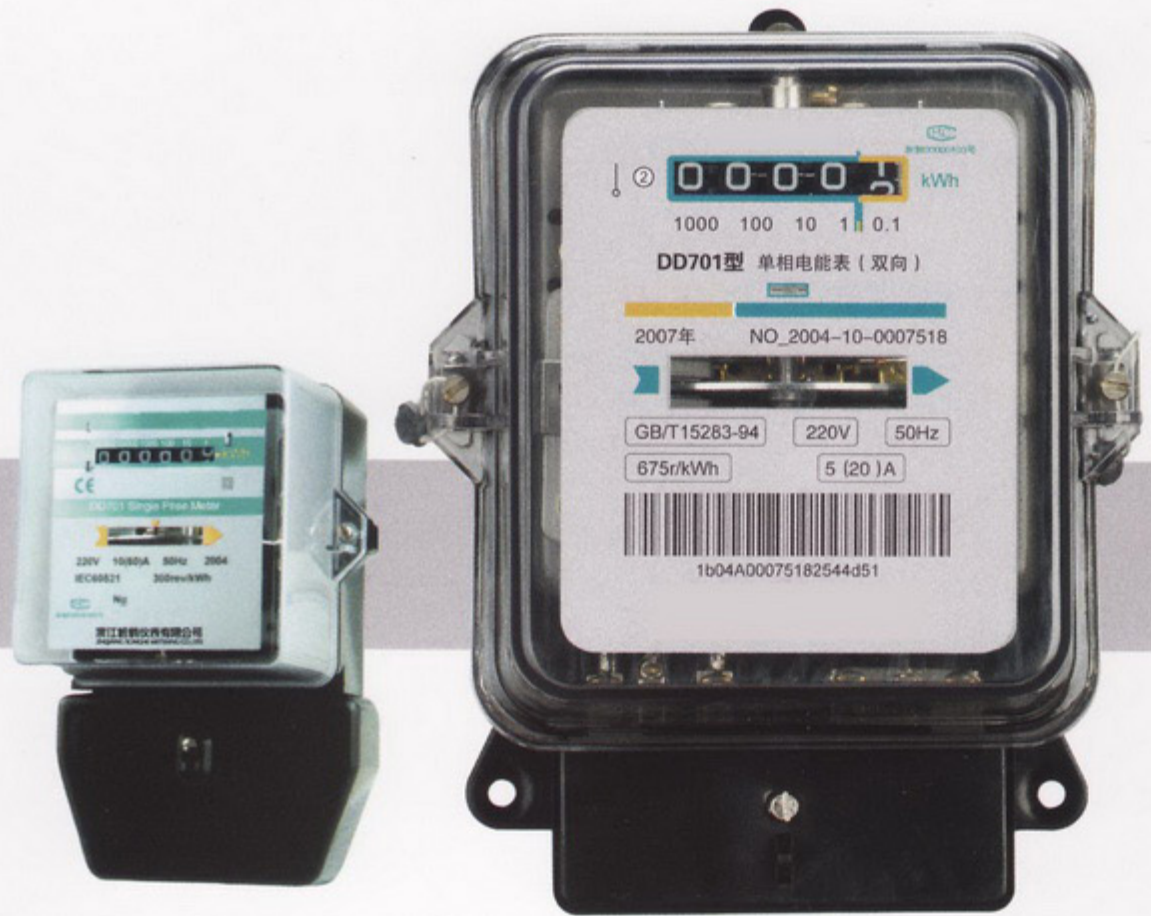


# DD701

## 长寿命电度表



### 简述

DD701系列单相长寿命电度表是吸引了国内外先进的电度表制造技术，产品符合GB/T15283-1994标准和国家电网公司《单相交流电感应式长寿命技术电度表订货技术条件》的要求。

### 特点

- 底壳:采用酚醛材料注塑成型,和瑞钮盒连为一体,其强度高,不易变形,密封,防尘性能。
- 罩壳:采用透明聚碳酸酯材料,具有阻燃、绝缘、不易破碎等优点。
- 轴承:采用磁推轴承,进口石墨环和高强度不锈钢导向针,保证了电度表在长期运行状态下磨损很少。
- 磁钢:采用铝镍钴6类磁钢,经充退磁和老化处理,可保持高的稳定性。
- 电磁系统:电磁元件采用铆钉铆接,保证磁气隙稳定,所有坚固螺钉加装弹簧垫圈。
- 转轴:蜗杆和轴采用一体化,保证了蜗杆与转轴同轴度,避免组合式结构产生的松动、脱落现象。
- 脉冲输出:可加装脉冲输出装置。

### Application

DD701 series single phase long-life meter uses foreign advanced technology for reference according with the standard GB/T15283-1994 and the requirements of 《Technology Terms for Ordering Single Phase Inductive Long-life Ammeter》 by the State Electric Power Corporation.

### Structure Advantages

- Base: Adopting phenolphthalein resin injection molding to connect the terminal box as a body with high intensity, little distortion and good airproof capability.
- Cover shell: Adopting transparent PC material to ensure burning hindering, insulation and non-crashing features.
- Bearing : Adopting magnetism push bearing and imported plumbago gasket and high intensity stainless steel guide pins to ensure little wear and tear under long time running.
- Brake magnet: Adopting AlNiCo6 alnico material, fulfilling adequately demagnetization and aging treatment.

- Electromagnetism system: Electromagnetism components assembly uses rivets and spring gaskets are added to all the fixed bolts.
- Rotor: Worm and axes are united together to ensure the align for them on the axes direction, avoiding the flexibility and desquamation of the compounding structure.
- Pulse output: It is permitted to add pulse output equipment

### Specifications

- Reference Voltage:220V
- Rated current:2.5(10)A、5(20)A、10(40)A、5(30)A、10(60)A、15(100)A、10(60)A、15(100)A
- Accurate grade:2.0
- Accuracy class:1.0
- Starting current:0.4%I<sub>b</sub>
- Power loss:0.5W/5VA
- Size:154 × 115 × 59mm
- Weight:540g 5(20)A;600g 10(40)A, 20(80)A

### 主要规格 Main specification

型号 Type	精度 Grade	参比电压 Reference Voltage	基本电流 (A) Rated Currenty
DD701	2.0级	220	2.5(10) 5(20) 10(40) 5(30) 10(60) 15(100)