

## 1 / 4" B/W CMOS SENSOR SPECIFICATIONS

### *Without Audio*

Image Device: OV5116  
TV System: CCIR / EIA  
Effective Pixels: 352 x 288 pixels / 320 x 240 pixels  
Sensing Area: 3.2mmx2.5mm  
Scanning System: 2:1Interlace  
Sync. System: Internal  
Resolution: 240TV lines  
Horizontal Sync. Frequency: 15.625KHz / 15.734KHz  
Vertical Sync. Frequency: 50Hz / 60Hz  
Minimum Illumination: 0 Lux/F1.2 *with IR*  
Video Output: 1.0vp-p, 75Ohm  
Gamma Consumption: 0.45  
AGC: Auto  
S/N Ratio: Better than 46dB  
White Balance: Auto  
Electronic Shutter: 1/50~1/6000 Seconds  
BLC: Auto  
Current Consumption: 200mA  
Power Supply: DC12V  
Operating Temperature: -10 ° C~45 ° C , RH95% MAX  
Storage Temperature: -30 ° C~60 ° C, RH95% MAX  
Lens: f=3.6mm / F = 2.0  
Lens Angle: 69°

## 1 / 3" COLOR CMOS SENSOR SPECIFICATIONS

### *Without Audio*

Image Device: OV7910  
TV System: PAL / NTSC  
Effective Pixels: 628 x 582 pixels / 510 x 492 pixels  
Sensing Area: 5.78mm x 4.19mm / 4.69mm x 3.54mm  
Scanning System: 2:1Interlace  
Sync. System: Internal  
Resolution: 380TV lines  
Horizontal Sync. Frequency: 15.625KHz / 15.734KHz  
Vertical Sync. Frequency: 50Hz / 60Hz  
Minimum Illumination: 0 Lux/F1.2 *with IR*  
Video Output: 1.0vp-p, 75Ohm  
Gamma Consumption: 0.45

AGC: Auto

S/N Ratio: Better than 48dB

White Balance: Auto

Electronic Shutter: 1/60~1/15,000 Seconds

BLC: Auto

Current Consumption: 200mA

Power Supply: DC12V

Operating Temperature: -10 ° C~46 ° C , RH95% MAX

Storage Temperature: -30 ° C~60 ° C, RH95% MAX

Lens: f=6.0mm / F = 2.0

Lens Angle: 69°

## 1 / 3" B/W CCD SENSOR SPECIFICATIONS

*Without Audio*

Image Device: SAMSUNG

TV System: CCIR/ EIA

Effective Pixels: 500 x 582 pixels / 510 x 492 pixels

Sensing Area: 4.9mm x 3.7mm

Scanning System: 2:1Interlace

Sync. System: Internal

Resolution: 420TV lines

Horizontal Sync. Frequency: 15.625KHz / 15.734KHz

Vertical Sync. Frequency: 50Hz / 60Hz

Minimum Illumination: 0 Lux/F1.2 *with IR*

Video Output: 1.0vp-p, 75Ohm

Gamma Consumption: 0.45

AGC: On

S/N Ratio: Better than 48dB

White Balance: Auto

Electronic Shutter: 1/60(CCIR) / 1/50(EIA) ~ 1/10,000 Seconds

BLC: Auto

Current Consumption: 300mA

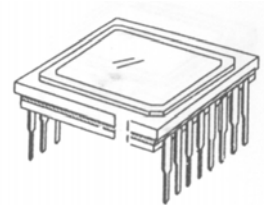
Power Supply: DC12V

Operating Temperature: -10 ° C~55 ° C(CCIR) or 60 ° C(EIA) , RH95% MAX

Storage Temperature: -20 ° C~60 ° C, RH95% MAX

Lens: f=3.6mm / F = 2.0

Lens Angle: 92°



## 1 / 4" COLOR CCD SENSOR SPECIFICATIONS

*Without Audio*

Image Device: SHARP

TV System: PAL / NTSC

---

Effective Pixels: 512 x 582 pixels / 512 x 492 pixels

Sensing Area: 3.6mm x 2.7mm

Scanning System: 2:1Interlace

Sync. System: Internal

Resolution: 420TV lines

Minimum Illumination: 0 Lux/F1.2 *with IR*

Horizontal Sync. Frequency: 15.625KHz / 15.734KHz

Vertical Sync. Frequency: 50Hz / 60Hz

Video Output: 1.0vp-p, 75Ohm

Gamma Consumption: 0.45

AGC: Auto

S/N Ratio: Better than 48dB

White Balance: Auto

Electronic Shutter: 1/60(NTSC) / 1/50(PAL) ~ 1/10,000 Seconds

BLC: Auto

Current Consumption: Max. 300mA

Power Supply: DC12V

Operating Temperature: -20 ° C~70 ° C , RH95% MAX

Storage Temperature: -40 ° C~85 ° C, RH95% MAX

Lens: f=3.6mm / F = 2.0

Lens Angle: 69°