

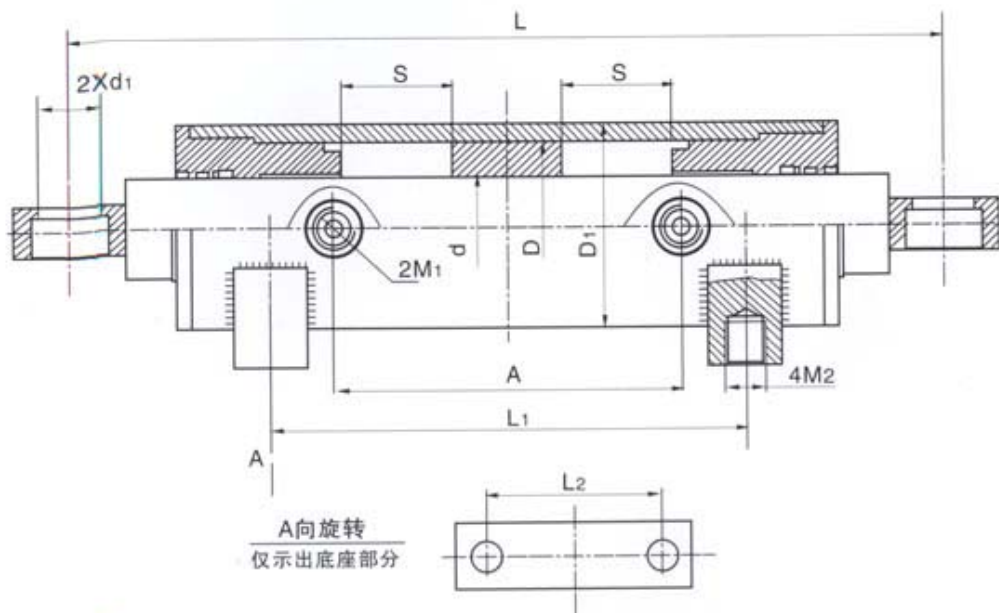
## Turning Cylinder For Forklift



### Features:

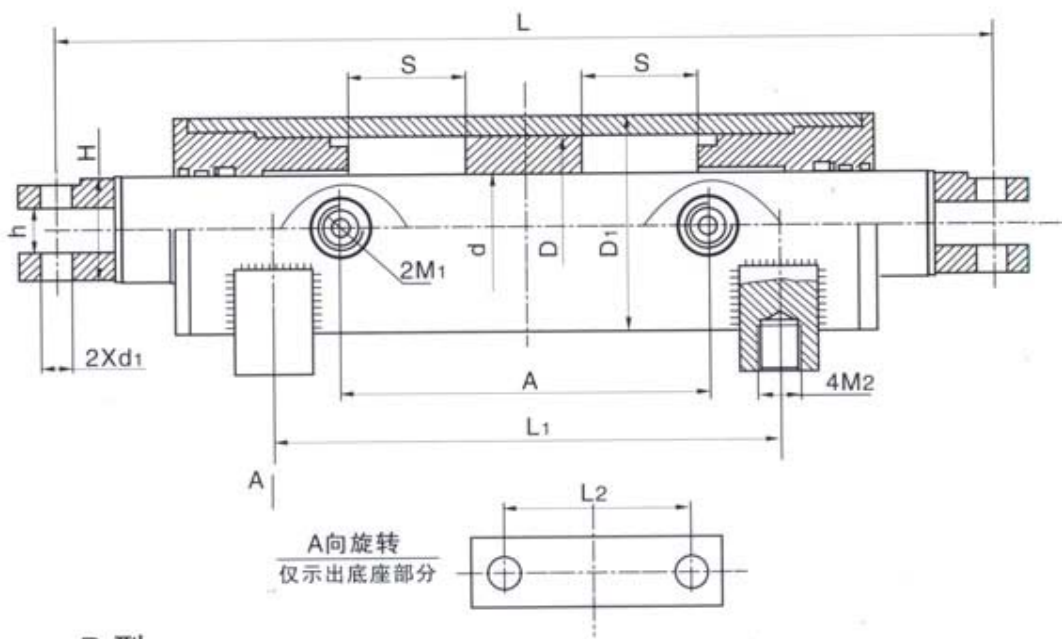
1. Nominal Pressure: 9~16 MPa (90 ~ 160 Bar)
2. NOK, Busak+Shamban Seals
3. Plated with chrome, chrome layer thickness  $\geq 0.03\text{mm}$ , surface hardness HV  $\geq 900$ , Ra0.2
4. A series of products is provided(with parameters below), can be revised or re-designed according to customer's requirements.
5. Used for 1.5~18T(1500KGS~18000KGS) forklift.

### Drawing:



A 型

Model A



B 型

Model B

Parameters:

No.	Drawing No.	d	D	D1	S	L	L1	L2	d1	H	h	A	M1	M2	Model
1	30CJA31-10000A	50	80	95	298	618	298	72	28	22		256	M20X1.5	M16	A
2	15CJA131-20000	40	63	76	90X2	556	276	65	17	38	16	228	M20X1.5	M16	B
3	50CYA31-6W-00	60	100	121	148.5X2	990.5	415	95	34	30		186	ZG3/8	M20	A
4	1.5DCZ-00	40	63	76	98.5X2	619.7	342	90	16	20		234	M16X1.5	M14	A
5	2.5DCZ-00	50	70	83	103.5X2	611.8	340	100	23	20		240	M16X1.5	M14	A
6	3.0DCZ-00	50	70	85	98.5X2	637	339	80	23	20		238	M16X1.5	M16X1.5	A
7	DCZ75/50.105X2-00	50	75	85	105X2	691	322	110	17	16		292	G3/8	M18	A
8	CZG70/40.89X2-00	40	70	83	89X2	630			23	20		232	9/16-18UNF		A
9	CZG65/40.81.5X2-00	40	65	75	81.5X2	570			23	20		210	9/16-18UNF		A
10	CZG80/50.98X2B-00	50	80	95	98X2	590	180	150	15	36	18	252	M14X1.5	Φ13	B
11	15-212000	30	50	62	85X2	490	200	60	18	12		193	M16X1.5	M12x1.5	A
12	30DH-212000A	50	80	94	81X2	493	260	86	31	16		196	M16X1.5	M12x1.5	A
13	CZG80/50.87X2A-00 (40DH-214000)	50	80	86	87X2	586	270	86	31	16		208	M16X1.5	M12x1.5	A
14	CZG90/60.116X2-00 (50W-411000)	60	90	105	116X2	872	460	90	20	25		360	G3/8	M22x1.5	A
15	CZG110/75.164X2-00 (80DH-411000T)	75	110	134	164X2	1135	466	104	20	25		466	M16X1.5	M22x1.5	A
16	CZG65/40.98X2-00 (N163-224000)	40	65	75	98X2	672	214	88	20	23		214	M16X1.5	M14x1.5	A
17	CZG60/40.62X2-00 (10QSD-220000)	40	60	72	62X2	664	166	80	15	18		166	M16X1.5	M14x1.5	A