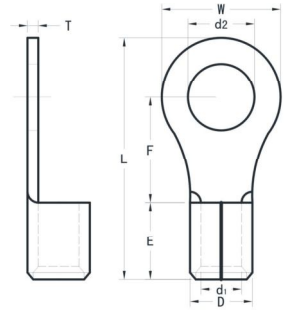




NON-INSULATED RING TERMINAL

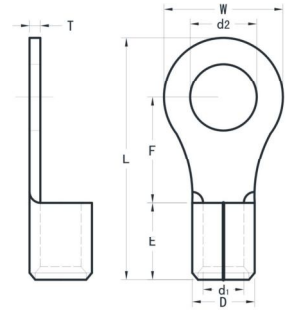


METAL PART MATERIAL: COPPER

WIRE RANG A.W.G./mm <sup>2</sup>	PRODUCT CODE	DIMENSION (mm)										
		d2	W	F	L	E	D	d1	T			
22-16 A.W.G. 0.5-1.5mm <sup>2</sup>	RNB1-3.2	3.2	5.5	5.0	12.5	4.8	3.4	1.7	0.8			
	RNB1-3.7S	3.7										
	RNB1-3.7M	3.7	6.6	6.3	14.4							
	RNB1-3.7L	3.7	8.0	7.0	15.8							
	RNB1-4S	4.3	8.0	7.0	15.8							
	RNB1-4L	4.3										
	RNB1-5	5.3	11.6	11.0	21.8							
	RNB1-5L	5.3										
	RNB1-6	6.4										
	RNB1-8	8.5	13.6	13.9	25.5							
	RNB1-10	10.5										
	RNB1-12	13.0								19.2	16.0	30.4
	RNB1-14	15.0										
	RNB1-16	17.0	27.0	21.0	39.3							
RNB1-20	21.0											
16-14 A.W.G. 1.5-2.5mm <sup>2</sup>	RNB2-3.2	3.2	6.6	4.8	12.8	4.8	4.1	2.3	0.8			
	RNB2-3.7S	3.7										
	RNB2-3.7M	3.7	8.5	7.8	16.8							
	RNB2-3.7L	3.7										
	RNB2-4S	4.3	8.5	7.8	16.8							
	RNB2-4L	4.3										
	RNB2-5S	5.3	9.5	7.3	21.8							
	RNB2-5L	5.3										
	RNB2-6	6.4										
	RNB2-8	8.4	12.0	11.0	21.8							
	RNB2-10	10.5								13.6	13.9	25.5
	RNB2-12	13.0										
	RNB2-14	15.0								19.2	16.0	30.4
	RNB2-16	17.0										
RNB2-20	21.0	27.0	21.0	39.3								



NON-INSULATED RING TERMINAL



METAL PART MATERIAL: COPPER

WIRE RANG A.W.G./mm <sup>2</sup>	PRODUCT CODE	DIMENSION (mm)							
		d2	W	F	L	E	D	d1	T
12-10 A.W.G. 4-6mm <sup>2</sup>	RNB5-3.7	3.7	7.2	6.1	15.7	6.0	5.6	3.4	1.0
	RNB5-4S	4.3							
	RNB5-4L	4.3	9.5	9.1	19.6				
	RNB5-5	5.3							
	RNB5-6	6.4	12.0	10.5	22.5				
	RNB5-6M	6.4							
	RNB5-8	8.4	15.0	13.5	27.0				
	RNB5-10	10.5							
	RNB5-12	13.0	19.2	16.0	31.6				
	RNB5-14	15.0							
	RNB5-16	17.0	32.0	25.2	47.2				
	RNB5-20	21.0							