

**CHINA DISPLAY TECHNOLOGY CO., LTD.**

**深圳市新深辉显示技术有限公司**

# **SPECIFICATION**

Product No.: **SVM19264BSGWI-1**

Customer: \_\_\_\_\_

Issue Date: **January 11, 2005**

<b>CHINA DISPLAY TECH.</b>		
<b>APPROVED</b>	<b>CHECKED</b>	<b>PREPARED</b>

Block 513,4,5,6<sup>th</sup> Floor Bagualing Industrial Area  
Shenzhen , China            Post Code : 518029  
TEL: 0086-755-25843700  
FAX: 0086-755-82262915

**CHINA DISPLAY TECHNOLOGY CO., LTD.**

Data	Sheet No.	Summary
		NEW

**SVM19264BSGWI-1**

**CHINA DISPLAY TECHNOLOGY CO., LTD.**

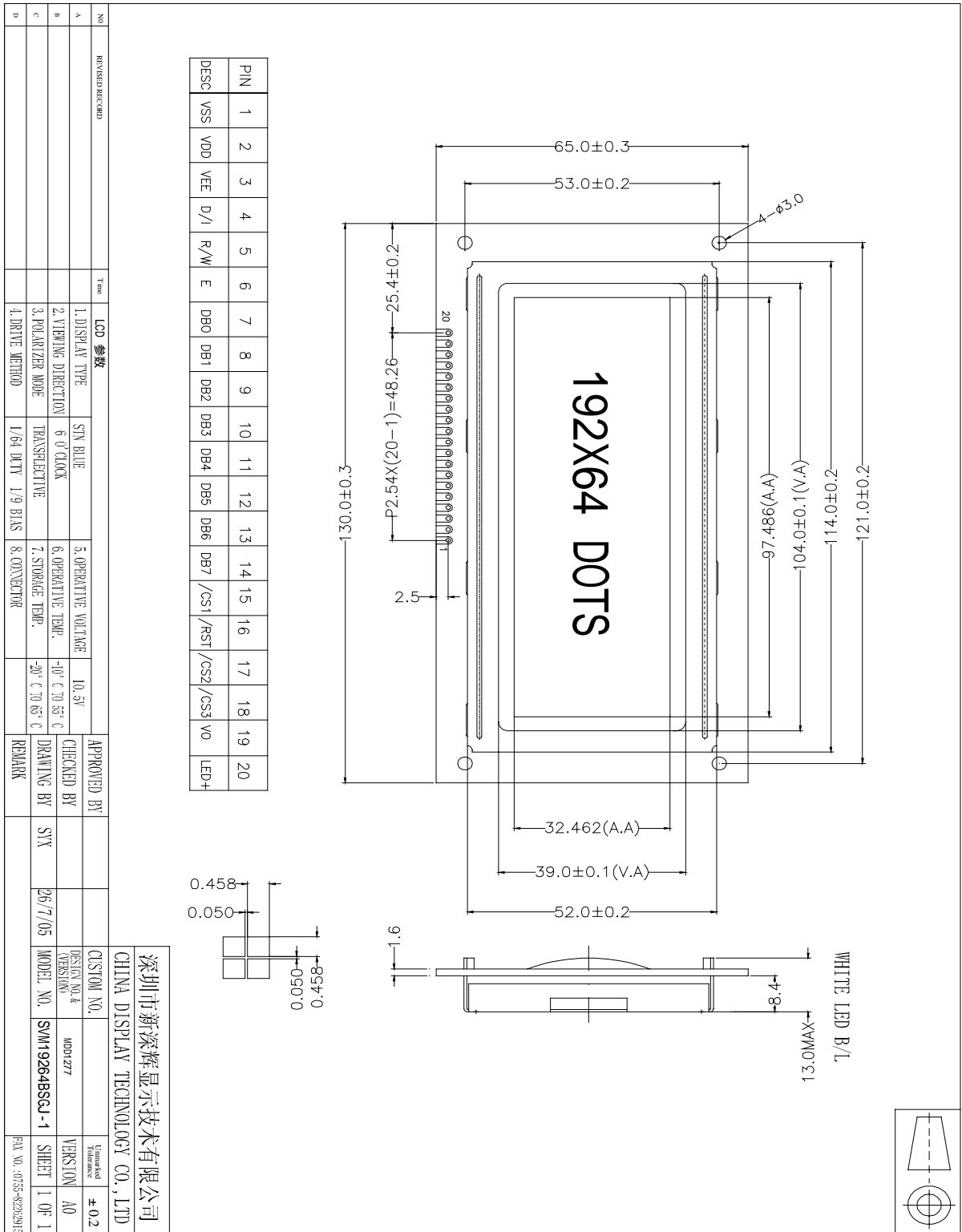
**Table Of Contents**

<b>Section/Sub Section</b>	<b>Pages</b>	<b>Rev.</b>
1 General Description	3	0
2 Mechanical Diagram	4	0
3 I/O Terminal	5	0



# CHINA DISPLAY TECHNOLOGY CO., LTD.

## 2 Mechanical Diagram



**SVM19264BSGW1-1**

## **CHINA DISPLAY TECHNOLOGY CO., LTD.**

### **3 I/O Terminal**

No.	Symbol	I/O	Function
1	VSS		Logical ground
2	VDD		Logical power, 5V
3	VEE		Lcd driver power , usually -10 V.
4	RS	I	Data/code selection: High: send D0-D7 to display RAM(DDRAM) Low: send D0-D7 to code register
5	R/W	I	Read/write selection: High: Read data when E is high Low: Write data when E jumping down
6	E	I	Read /write enable.
7~14	DB0~DB7	I/O	8bit data bus
15	CS1	I	Left chip selection. Select left part at low level
16	RET	I	Reset at low level Reset signal result to close display and set line to 1.
17	CS2	I	Middle chip selection. Select right part at low level.
18	CS3	I	Right chip selection. Select right part at low level.
19	V0		LCD driver voltage, be sure to use a 10K resistance between VEE and V0.
20	LED+	+5V	LED+ supply voltage(+5v).