

Inquiry - technical requirements / quality

Project no. LT6006

Article description



Field jacket

with the following main details:

- Stand up collar
- with 2 breast pockets and 2 insert pockets at front
- collar with removable hood
- with badge on the left sleeve and pocket flaps
- 2 shoulder flaps with press fasteners
- tunnel string at waist position

Material: 100% Cotton, garment washed

Colours: Main fabric: Dark blue, Lining: blue grey

All according Tchibo's specification sample / sketches

Style & Workmanship

collar

Valid for All countries

- stand-up collar with removable hood
- hood (made of lining fabric) is integrated in the collar and not visible because of a concealed zipper
- on the left wearer's side is a flap
- the flap is to close with a press fastener
- next to the flap is placed a lower part of press fastener (without any function)

hood

Valid for All countries

- hood is colour-matched to the lining
- the width is adjustable by a cord with cord stopper
- the ends of the cord are knotted
- hood is composed of three parts

front

Valid for All countries

- center front is closed by zipper (refer to "accessories")
- zipper end is made of main fabric
- zipper is not visible because of a blind with concealed press fasteners
- on the left and right wearer's side are two attached breast pockets located
- breast pockets with flap, box-pleat and volume-pleat
- flap is closed by press fastener
- on the flap of the left breast pocket is a motif print
- under the breast pocket are placed two insert pockets with attached flaps and concealed press fasteners
- in height of waistline a string is worked in all-around to regulate the width

shoulder flap

Valid for All countries



- shoulder flap is fixed at the sleeve seam
- the ends are pointed and have a worked in press fastener

back

Valid for All countries



- backside with back yoke
- the left and the right side are worked with division seams
- back yoke and division seams are stitched by 2-needle seam
- in height of waistline a string is worked in all-around to regulate the width

sleeve

Valid for All countries



- sleeve with 3 seams and attached cuff
- division seam of front sleeve and closing seam are stitched closed to the edge
- in the division seam of back sleeve are two small pleats worked in (distance 14cm)
- on the left sleeve is a badge
- attached cuff with pointed end and concealed press fastener
- width of the cuff is regulated by two lower parts of press fasteners which are worked in

rivets

Valid for All countries



- in the area of sleeve insert seam and side seam are three rivets
- all-around is a simple stitching

hem

Valid for All countries

- width of hem is approx. 3cm
- a string is worked in in the hem to regulate the width

inside workmanship

Valid for All countries

- the lining of the jacket is grey/blue
- on the left side is a small pocket for a mobile phone
- on the upper edge of the pocket is a rubber band worked in
- the pocket is made out of main fabric
- besides there is an inner pocket on the left and right side, which are worked up with velcro

workmanship in general

Valid for All countries

- A spare button must be provided for each button size. The spare buttons must be fixed to the sew-in label or be enclosed in a polybag.
- Buttons must be fixed safely, durably and without thread ends.
- In the case of fastening buttons, the stem must always be wound round with the thread. The stem height must be adapted to the thickness of the material to make it easy to button up or open.
- Depending on the product, buttons must be secured with a counter button.
- The rivet connection must not display any crushing/folding. Pockets, including inside pockets, must be securely and durably stitched at the corner points and if necessary must have additional bar tacking.
- The pockets must be flat and properly finished.

- Where necessary, pocket openings are to be reinforced with interlining, in order to prevent them from stretching and distending and to guarantee strength.
- The pockets must be sewn on symmetrically and their position must correspond to the specification.

- No colour/embossing/shining/hand-feel difference in products of the same colour which belong together within a sales unit, nor in the whole delivery.
- No shiny areas caused by ironing.
- The product must be clean, free of fuzzes, with no hanging threads and ironed.
- All parts of pattern must have adequate seam allowances.
- The minimum stitch density for fabrics is 4 stitches/cm
- The end of seams must be secured.

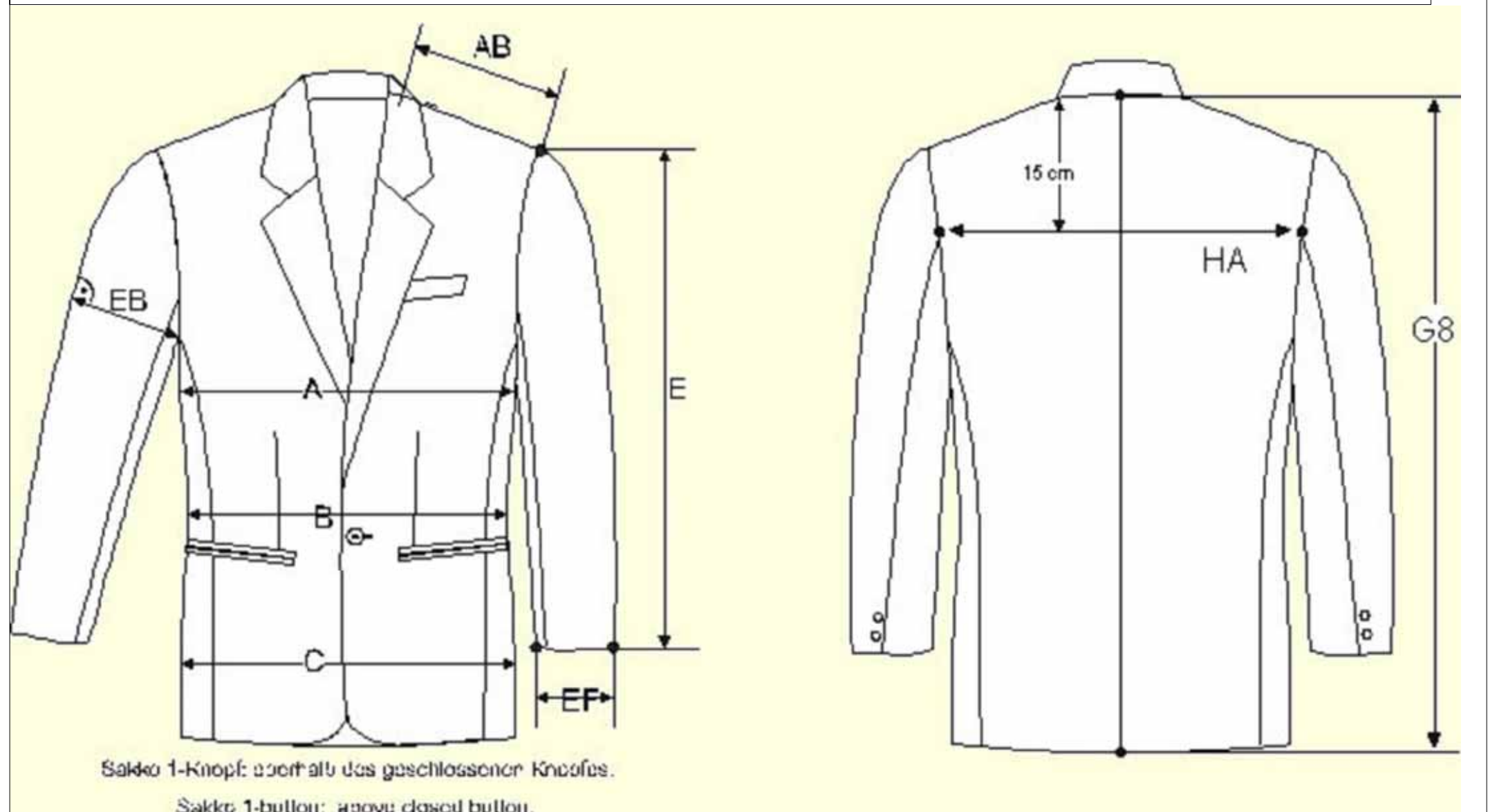
- The following stitching errors must not occur:
 - Open seams, jumped stitches, needle holes, marks of the presser foot
 - Multiple stitching or visible restarting of a seam
 - Skew or wavy seams, twisted seams

Initial measurement chart

Unit of length cm

Abbr.	Measurement	Tol -	Tol +	D: M NL: M GB: M F: M I: M PL: M CZ: M	D: L NL: L GB: L F: L I: L PL: L CZ: L	Comment
A	1/2 Brustumfang, 2 cm unterhalb Armloch 1/2 chest, 2 cm below armhole	-1	1	64	68	
B	1/2 Taillenumfang 1/2 waist	-1	1	60	64	
D2	Saumweite hem width	-1	1	60	64	
AB	Schulterbreite breadth of shoulder	-0,5	0,5	16,5	17	
E	Ärmellänge sleeve length	-1	1	65	66	
EB	1/2 Oberarmumfang 1/2 width of upper sleeve	-0,5	0,5	26	26,5	
EF	1/2 Manschettenweite geschl. 1/2 width of cuff closed	-0,5	0,5	16	16,5	
EF3	Manschettenbreite breadth of cuff	-0,5	0,5	5	5	
FA3	Kragenhöhe hintere Mitte height of collar centre back	-0,5	0,5	9	9	
FC	Kapuzenbreite width of hood	-1	1	27	27	
FC2	Kapuzenhöhe height of hood	-1	1	36	36	
G8	Länge hintere Mitte centre back length	-1	1	79	80	
HP	Passenhöhe vom Schulterpunkt height of yoke from HPS	-1	1	20	21	
HA	Rückenbreite width of back part	-1	1	48	50	measured at the back yoke
HB1	Belegbreite breadth of facing	-0,5	0,5	8	8	
HC	Knopfleistenbreite breadth of button placket	-0,5	0,5	6	6	
HC4	Knopfabstand button distance	-0,5	0,5	22	22	
TH1	Höhe Tasche 1 height of pocket 1	-0,5	0,5	18	18	breast pocket
TB1	Breite Tasche 1 breadth of pocket 1	-0,5	0,5	13,5	13,5	breast pocket
TB2	Breite Tasche 2 breadth of pocket 2	-0,5	0,5	18	18	insert pocket

Abbr.	Measurement	Tol -	Tol +	D: M	D: L	Comment
				NL: M	NL: L	
				GB: M	GB: L	
				F: M	F: L	
				I: M	I: L	
				PL: M	PL: L	
				CZ: M	CZ: L	
TB3	Breite Tasche 3 breadth of pocket 3	-0,5	0,5	16,5	16,5	inner pocket



Material

Material	woven	Material composition	100% cotton
Valid for	All countries	Pantone	
Purpose	main fabric	Colour code	navy blue
Position			
Comment	Fabric acc. Colour, handfeel and Optic exact like Tchibo specification swatch		
	combed yarn	please state!	
	weave	canvas	
	fabric density warp	approx. 32 threads/2cm	
	fabric density weft	approx. 30 threads/2cm	
	mass per unit area	approx. 270g/m ²	
	finishing	Jacket is garment washed	
	sanforized (preshrunk)	make sure that mean value of pre-shrinkage is 8% at least	
	dimensional change	Dimensional change: Length / Width: +/- 2% Percentage of difference of dimensional change of length and width should not exceed 2 points.	
Material	woven	Material composition	100% polyester
Valid for	All countries	Pantone	18-4215 TC
Purpose	lining	Colour code	blue-grey
Position	front/sleeve/collar		
Comment	230T		
	yarn count warp	75dtex	
	yarn count weft	75dtex	
	weave	plain weave	
	fabric density warp	150threads/inch	
	fabric density weft	80 threads/inch	
	mass per unit area	approx. 70 g/m ²	
Material	wadding	Material composition	100% polyester
Valid for	All countries	Pantone	
Purpose	wadding	Colour code	
Position			

Position	
Comment	Additionally, with thin fleece to prevent the outcome of fine fibres. Stitching acc. Tchibo specification
yarn count	44" x 50 YDS 60" x 40 YDS
mass per unit area	ca. 150g/m ² (5.3 Oz)

Accessories

#	Valid for	Trims type	Description	Position	Material composition	Size/Length/Width	Consumption	Pantone	Colour	Colour code	Comment
1	All countries	zipper	metal, auto lock, one way	center front	metallic	No. 5	1			Antique Brass	Original YKK optic like specification
2	All countries	zipper	metal, auto lock, one way	hood	metallic	No. 5	1			Antique Brass	Original YKK optic like specification
3	All countries	press fasteners	metal	pockets	metallic	acc. specification	15			Antique Brass	acc. specification
4	All countries	rivets	metal	under the insert seam of sleeve	metallic	acc. specification	6			Antique Brass	acc. specification
5	All countries	cord stopper	plastic	waist and hem		acc. specification	4			dark blue	acc. specification sample
6	All countries	cord	cord made of polyester	waist and hem		acc. specification	2			dark blue	acc. specification sample

Remarks
<p>The threads for sewing and embroidering must be matched to the outer material, lining and all other materials used, with respect to the following points:</p> <ul style="list-style-type: none"> - Tear strength - Elasticity - Shrink-proof - Heat resistance - Colour fastness - Matching colour with the material <p style="padding-left: 40px;">(Exception: where contrast colours are required)</p>
<p>The fastenings must be smooth and easy moving, firm and close completely. All fastenings and rivets must withstand 2000 actuations. All fastenings and rivets must be securely attached and must not come off by themselves. Press studs must – if necessary – be fitted with a plastic shim, to prevent the press stud from being ripped out.</p>
<p>All accessories, e.g. buttons, zippers, must be matched with the care instructions given in the quality and test specifications, as well as the materials. All accessories must be colour fast and rustproof. The paint must not come off painted accessories. No sharp edges or splintering, which could lead to injuries, are permitted. All accessories are subject to the respective contaminant specifications, as given in the quality and test specifications.</p>